

Catalog Price: \$5

Surface Design

Paper Arts

Jewelry



Fine Art

Marbling

Silk Painting

Scrapbooking

Calligraphy

Versatile Tools for Creative Artists



Versatile Tools for Creative Artists

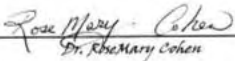
Atelier de Paris began life as a resource for silk painters. Over the years, not only has our product line expanded, but we have found that our tools work just as well in other media. Many of the products in this catalog have been custom designed by us in response to our customers' needs and their experimentations.

One of the great pleasures in creating this catalog has been to include examples of our customers' art to inspire others. It is through their work and our own that we are able to include the directions, suggestions and helpful hints ("Le Tip") for working with dyes, paints, pens, brushes, wax, jewelry and all the other wonderful tools.

In this catalog, you will find very useful products for:

- ✦ Silk Painting
- ✦ Jewelry Design
- ✦ Paper Arts and Scrapbooking
- ✦ Surface Design
- ✦ Fiber Arts / Quilting
- ✦ Marbling
- ✦ Watercolors
- ✦ Calligraphy
- ✦ Chinese Brush Painting
- ✦ Fimo Clay
- ✦ Acrylic Painting
- ✦ Other Fine Arts and Crafts

Have fun and share the joy of creating!



1543 South Robertson Boulevard
Los Angeles, CA 90035

email: rosemary@atelierdeparis.com
website: www.atelierdeparis.com

Tel: (310) 553-6636 Fax: (310) 553-9621

For everything in this catalog, visit our Website:

www.silksupplies.com

For additional creative craft supplies, check out our other websites:

For Customizable Jewelry

Embellish our findings with your silks, needle-point, photographs, fimo designs, paintings, mosaic, and more!

To create your own unique designs, please see the Customizable Jewelry section starting on Page 61 in this catalog and on our website:

www.artisticfindings.com

For Distinctive Scrapbooks

greeting cards, invitations and other elegant paper arts; custom candles; personalized vases, wine glasses and embellished journals, and other expressive gifts, please see our website:

www.pewteraccents.com

Atelier de Paris

1543 South Robertson Boulevard

Los Angeles, California 9035

Tel: (310) 553-6636

Fax: (310) 553-9621

Email: rosemary@atelierdeparis.com

Many Thanks!

We would like to thank our wonderful artist/customers for allowing us to use their work as examples in this Catalog. And our regrets that we could not include everything our customers offered. We hope to include them in future publications. All Artist's works included in this publication remain the property of the Artist and are used here with permission.

<i>Naila Ataddin-Sanders</i>	<i>Smadar Knobler</i>
<i>Gabriele Agustini</i>	<i>Anne Lan</i>
<i>Olivia Batchelder</i>	<i>Dolores Littles</i>
<i>Denise Bean</i>	<i>Christine Mariotti</i>
<i>Louise Blumberg</i>	<i>Jan Mayer</i>
<i>Elia Cohen</i>	<i>Lysinka Otto-Runkel</i>
<i>Liana Cohen</i>	<i>Martin Pretorius</i>
<i>Earlene Dakan-Weiss</i>	<i>Suzanne Punch</i>
<i>Gabriella Di XX Miglia</i>	<i>Nora of Silkworks</i>
<i>Andrey Ecratty</i>	<i>Sissi Siska</i>
<i>Cicely Gilman</i>	<i>Susan Bodenqer Skove</i>
<i>Nils Glazer</i>	<i>John Sun Silks</i>
<i>Helen Glidden</i>	<i>Lidia Suvanova</i>
<i>Gary Glass</i>	<i>Andrea Verona</i>
<i>Young Kim</i>	<i>Lucilla Warren</i>

Front and Back Cover Background: Detail of a scarf painted with Dupont Dye and salt by RoseMary Cohen

Tiger Jacket on Back Cover painted with Dupont Dyes and Antifusant by Liana Cohen

Special Thanks to Lucilla Warren for the design of this Catalog


Published by Lico Publishing © 2004 All Rights Reserved.

Table of Contents


Dyes and Paints		Pens and Markers		Other Textile Services	
Rocco		Fillable Pens	33	Special Pleating	58
Liquid Paint	5	Custom Markers	33	Steaming, Sewing	58
Dilutant (Thinner)	5	Ghost Pen	33	Dyeing, Devoré	58
Thickener	5	Black Markers	33	Necktie Construction	60
Opaque Paint	5				
Pearlized & Metallic	6	Silks and Velvets		Custom Jewelry	
Water-based Resist	7	Silk & Velvet Scarves	35	Frames and Cases	62
Antifusant	7	Silk & Velvet Yardage	36	Pendants and Pins	63
		Silk Garment Blanks	36	Necklaces and Bracelets	69
		Silk Fashion Accessories	38	Tie Accessories	72
		Silk Jewelry	42		
H. Dupont		Silk Home Accessories	45	Packaging and Display	
Dyes	9			Gift Boxes	73
Dilutant (Thinner)	10			Tie Hooks	73
Antifusant	11			Clever Clips	73
Thickener	11	<i>"Roundabouts"</i>	46		
Gutta Serti N	12	Greeting Cards	47		
Black Gutta	12			Books by RoseMary Cohen	74
Silkscreening Resist	13	Stretcher Frames	49	Silk Painting Guide	76
Colored Gutta	13			Ordering Information and Form	78
		Hooks and Pins	50		
Devoré (Fiber Burn-out)	14				
Alter Ego	15	Useful Tools			
Silky Way Dyes	16	Design Patterns	51		
		Tracing Wheel	51		
Batik Supplies		Droppers	51		
Tjantings	18	Mixing Trays	52		
Textile Printing Blocks	18	Gloves	52		
Wax Melting Pot	19	Jars & Bottles	52		
Wax	19	Color Wheels	52		
		Splatter Screen	52		
Marbling					
Introductory Kit	21	Steamers	53		
Marbling Powder	21				
Design Tools	21	Kits			
Water Art Marbling Kit	23	Introductory Rocco Kit	54		
		Deluxe Rocco Kit	54		
Supplemental Chemicals	24	Rocco Perlized Resist Set	54		
		Pre-Gutta Necktie Kit	54		
Applicators		Introductory H. Dupont			
Bottles and Tips	26	Silk Painting Kit	55		
Air Pen	27	Deluxe H. Dupont			
Paint Striper	27	Silk Painting Kit	55		
Applicolor	28	Marbling Kit	56		
		Water Art Marbling Kit	56		
Brushes					
Traditional Brushes	29	Books and Publications	57		
Collector Brushes	31				
Stencil Brushes	31				
Foam and Wash Brushes	32				


Product Guide

To help you find products for your preferred medium, there are symbols on each page identifying potential areas of use for those products:

 Surface Design & Fiber Arts

 Silk Artworks

 Paper Arts & Scrapbooking

 Fine Arts and Crafts: watercolor, acrylic, calligraphy, wood, leather and others.



Rocco Paints

Rocco Paints are high quality, water-based paints that leave a very light hand on all fabrics (natural and synthetic) and can also be used to excellent effect on other absorbent surfaces:

- ❖ Art Papers
- ❖ Artist Canvas
- ❖ Mat Boards
- ❖ Card Stock
- ❖ Scrapbook Pages
- ❖ Wood
- ❖ Leather
- ❖ Baskets
- ❖ Fimo Clay
- ...and Others
- ❖ Silk
- ❖ Cotton
- ❖ Linen
- ❖ Denim
- ❖ Wool
- ❖ Blends
- ❖ Polyester
- ❖ Acetate
- ❖ Microfiber
- ...and Others

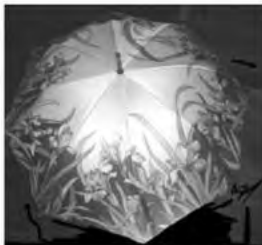
The Liquid Paints are easy to use, excellent for silk painting – with or without a resist line – and for direct painting on almost any surface. Use them diluted to create delicate washes, undiluted for opaque coverings and thickened for stamping or screening. A versatile paint useful for:

- ❖ Direct Painting
- ❖ Batik
- ❖ Silk Painting
- ❖ Salt Effects
- ❖ Sponging
- ❖ Stamping
- ❖ Stenciling
- ❖ Block Printing
- ❖ Monoprinting
- ❖ Silk-screening
- ❖ Marbling
- ❖ Airbrushing
- ❖ Sun Effects
- ❖ ... and other techniques

To make them permanent on fibers, heat set with either an iron or in a dryer set to the appropriate temperature for the fabric. They do not need to be heat set on surfaces that will not be subject to washing.

Rocco Paints can be combined with other acrylic paints or watercolors to create unusual effects on paper and canvas.

All of the paints are ready-to-use and intermixable. Rocco Paints are non-toxic and conform to ASTM D-4236. They should not be allowed to freeze or be exposed to excessive heat or sunlight.



Umbrella painted with Rocco Paints
by Young Kim





Rocco Products

Rocco Liquid Paints

A Great Product! Rocco Liquid Paints work on any absorbent surface (paper, fabric, leather, basketry, etc) and they are

- ⇄ transparent
- ⇄ lightfast
- ⇄ ready to use
- ⇄ intermixable,
- ⇄ bright, clear colors

They leave the lightest hand on silk and other fabrics. On surfaces not subject to washing, no fixing is needed. To fix on fiber, iron or dry in a dryer for 10 minutes on the heat appropriate to the fabric. Works on natural and synthetic fibers.

Mix with Dilutant to create lighter pastels. Mix with Thickener to use for stamping, stenciling, screen-printing, etc.

The Color Chart is on the inside cover. Please use both the color number and the color name when ordering.

#RLP 2 oz., 8 oz., 32 oz., Kit



To Create Salt Effects
Paint silk or paper with Rocco Liquid Paint, sprinkle or drop just a few drops of dilutant on the painted surface and scatter salt over it. Let dry. The result is stunning!

Different sizes of salt crystals - from table salt to rock salt - will create different and distinctive patterns. We recommend trying out the different sizes to explore the possibilities for special effects.

Once the painted surface is dry, brush off the salt before proceeding. The salt can be re-used but may transfer colors from one project to another (sometimes a desirable effect, sometimes not!). If you live in a damp climate, it helps to dry the salt in the microwave for a minute before using.

Rocco Dilutant

This Concentrate is economical! Mix 1 part Dilutant to 7 parts water (For example, in a 16 oz bottle, pour in 2 ounces of Dilutant and add 14 ounces of water. Stir or shake and use as needed.)

Use Dilutant for pastel colors and to enhance salt effects. Can be used with all of the Rocco paints. #RLD 2 oz., 8 oz., 32 oz.



Hand-cut stencil print on paper with Rocco Opaque Paint by Lucilla Warren

Rocco Thickener

Use the Thickener to control the spread of the Rocco Paints - both the Liquid Paints and the Opaque Paints. Add this ready-to-use clear gel in any proportion until the consistency you want is reached, and use for:

- stamping
- stenciling
- silkscreening
- monoprinting
- direct painting
- as a resist

After heat setting on fabric, remove the gel by washing. (Heat setting on other surfaces is not necessary.)

#RLT 8 oz., 32 oz., Gallon



Metal jewelry painted with Rocco Opaque Paints and Pearl Resist.



Butterfly design using resist
by RoseMary Cohen

Rocco Opaque Paints

Rocco Opaque paints are double pigmented (compared to the Liquid Paints) and provide good coverage while keeping a soft flexible hand on fabrics.

Ready to use and intermixable, like the Liquid Paints, they can be used on any absorbent surface. Add Thickener for stamping, stenciling, etc.

On surfaces subject to washing, fix by ironing or dry in a dryer for 10 minutes on the heat appropriate to the fabric.

The Color Chart is on the inside cover. Please use both the color number and the color name when ordering. #ROP 2 oz., 8 oz., 32 oz., Gallon

Rocco Water-Based Resist

Rocco's Water-Based Resist is excellent for silk painting. It holds the line well, and it may be colored by adding a few drops of a Rocco paints or of a dye.

After setting the color, washing the painted silk will cause the resist to disappear and leave a soft hand to the fabric.

This product is excellent for silk-screening a resist pattern on fabric.

To use as an anti-bleeding or anti-fusant for direct painting, mix the Resist half and half with water.

#ROR 8 oz., 32 oz.



Celestial Design Vest and Tie were airbrushed with Rocco Paints.
by Gary Glass

Le Tip

Applying Resist

When applying Resist, push the metal tip firmly against the fabric while squeezing the bottle gently, so that the resist will go through the fiber.





Rocco Pearlized and Metallic Paints and Resists

Everyone's Favorite Product!

Rocco's Pearlized Paints and Pearlized Resists add a subtle glow to all your projects. On paper and other surfaces, they add glamour and elegance.

On fabric, they have the softest hand of any metallic fabric paints on the market.

They are very effective used on top of hand-dyed fabrics to create highlighted designs or text.

They can be combined with other types of paints - including watercolors and acrylics - to enhance your work.

On surfaces subject to washing, fix by ironing. The Color Chart is on the inside cover. Please use both the color number and the color name when ordering.

#RPM 2 oz., 8 oz., 32 oz., Gallon
#RPK Resist Kit



Bed cover and pillows painted with Rocco Resists and Liquid Paints
by Young Kim

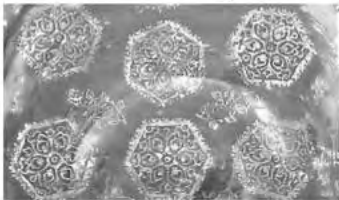


Le Tip

Background Patterning

Dilute Rocco Pearlized or Metallic Resist 50/50 with water, and sponge it with a rough sponge (such as a natural sea sponge) onto paper- or other surface not subject to washing - for a glowing background to your art.

To keep the pattern looking random as you apply it, change the direction and angle of your hand frequently.



Rocco paint using brushes and textile printing blocks on Mulberry paper by RoseMary Cohen



Detail of a design with gold Rocco Metallic Resist sponged on a textured background and ginkgo leaves over-stenciled in Rocco Opaque Paint by Lucila Warren



Rocco Antifusant (Anti-Bleeding Agent)

When you touch paint or dye to fabric, it immediately spreads out in all directions. This effect is usually controlled by using a resist to define the areas that will contain the dye.

When you want to paint free-hand on fabric without being limited by resist lines, you need this product!

This is a clear creamy liquid that acts as a coating agent. Apply the Antifusant to the fabric in a thin layer with a foam brush or an Applicolor (page XX). As it dries, the fabric stiffens and becomes like paper.

You may also combine the Antifusant with one of the Rocco paints to create a colored surface that is also ready for over-painting without bleeding



This painting is actually composed of two layers. The bottom layer, the landscape, is painted on crepe de chine using antifusant. The top layer, the blooming tree, is painted on silk organza, also using antifusant. Painting by Christine Mariotti.

Use the Antifusant over the entire surface or just small sections of the fabric.

Set the Rocco color with ironing or in a dryer for 20 minutes. After setting, rinse the fabric in

cool tap water to remove the Antifusant. The stiffness disappears and the fabric regains its original softness.

#ROA 2 oz., 8 oz., 32 oz.



Teaching Children

When teaching introductory silk painting to children, we recommend using the Rocco PearIALIZED Resist and the Rocco Liquid Paints.

They give great results, are very easy to use, easy to clean up and are non-toxic. Wash hands with soap and water.

Note: If the paint drops on the carpet or on clothes, it is important to wash it off immediately. Once it dries, it becomes permanent.



H. Dupont French Silk Dyes

H. Dupont French Silk Dyes give clear, rich colors on silk - both brilliant and subtle - and are designed for both professional artists and serious amateurs.

The H. Dupont has been manufacturing dyes for over a century. Their dyes are used worldwide, are of the highest quality and can be used with:

- Resists
- Direct painting
- Painting with antifusants
- Shibori
- Discharge
- Batik
- Watercolor effects
- Salt effects
- Alcohol effects
- Silk Screening
- Samping
- Stenciling
- ...and other techniques



H. Dupont Dyes must be set by steaming. Once set, the colors are permanent and light-resistant. The fabric can be washed or dry cleaned.

H. Dupont Dyes conform to ASTM D-4236. They should not be allowed to freeze or be exposed to excessive heat or sunlight.

The most striking salt effects are achieved with H. Dupont dyes. See the Color Gallery in this Catalog for two examples.

H. Dupont Dyes

The Dyes come in a wide variety of colors and all may be mixed together to create an almost infinite range of rich and subtle colors.

The Color Chart is on the inside cover. Please use both the color number and the color name when ordering. #HDD 50 cc., 8 oz., 16 oz., 32 oz

COULEURS
POUR LA SOIE ET LA LAINE



Detail of a Scarf using Dupont Gutta Resist and Dupont Dyes with salt in the border by RoseMary Cohen



Shaded Flower Petals and Leaves
Inside a resist-defined shape, put a single drop of color close to (but not directly upon) one end of the shape. With a clean brush, use dilutant to brush the color towards the other end.



Pillows painted with Dupont dyes and resists.
by Lucilla Warren.

H. Dupont Dilutant

The Concentrated Dilutant (dye thinner) is used to create pastel colors. The Dilutant comes in a concentrate which is very economical.

Dilute it to working strength by mixing 4 tablespoons of Dilutant into 32 oz. of water (distilled water is preferred, but not required; tap water will do just fine). Shake the mixture well and use it as needed to obtain the desired shade of color.

To create spontaneous patterns, splash the dilutant on to wet or dry dye and tilt and move around the fabric on its frame to create blends of colors and random patterns.

The working strength mixture can also be used as a preliminary spray to wet down the silk when painting on a flat surface or when using watercolor techniques

#HDT 8 oz., 32 oz.



H. Dupont Serti-Gutta, Thickener and Antifusant



Steamy Set

Ensemble painted with
Dupont dyes and wax.
by Andrea Verona.





Two-part silk dress with gold Rocco resist and Dupont dyes by Lysinka Otto-Runkel.

H. Dupont Water-Based Antifusant

(Anti-Bleeding Agent)

This is a clear, creamy liquid that acts as a coating agent. When you do not wish to use a resist to define areas of dye, but rather paint directly on the silk, apply a thin coat of the Antifusant to the fabric with our Foam Brush or Rocco Applicolor. As it dries, it will stiffen the fabric and control the flow of the dyes. Once dry, you may paint directly on the fabric, and very little bleeding will occur.

The Antifusant may be used over the entire fabric or small sections.

After setting the dye, rinse the fabric in lukewarm water to remove the antifusant. The stiffness will disappear and, the fabric will regain its original softness. #HDA 8 oz., 32 oz.



Steam & Set

H. Dupont Epaississant (Dye Thickener)

H. Dupont Dye Thickener is a transparent water-soluble gel used to thicken dyes for silk screening, stenciling, block printing and direct painting.

It is also ideal for small sections requiring fine details where gutta-resist cannot do the job.

The Epaississant can also be used as a resist and applied with a metal-tip applicator. To color Epaississant, simply add a little Dupont dye. The resist line will remain colored after washing.

#HDE 8 oz., 32 oz.



TIP: Using Gutta N as an Antifusant Dupont's Classic Clear Gutta N can also be used to create an antifusant - which allows the silk to behave like paper to accept direct painting with unthickened dyes.

Add 1 part Gutta N to 7 parts Dupont Gutta Solvent. Apply to the fabric, using a foam brush or an Applicolor. Let dry (it will dry quickly) and paint over it as on paper.

The Tiger (on the Back Cover) was first painted with this mixture to create an anti-bleed surface. Additional resist lines were added later to further define the design.



Detail of a scarf painted using Dupont Dyes and Dupont Epaississant mixed with dye to create colored resists by Helen Glidden



H. Dupont Classic Clear Gutta Serti N

Gutta is a colorless rubber and solvent-based resist usually called Gutta Serti. "Serti" comes from the French verb, "Sertir" which means to encircle. This is exactly what the gutta does when tracing a design.

The Gutta acts as a barrier to prevent the dye colors from flowing into each other.

This Gutta is of the highest quality and has excellent holding power. It is the resist of choice when you are looking for a sharp definite resist line.

It is not necessary to remove the Gutta lines if they have been applied correctly. Over time, the lines will become off-white and develop a patina. If you wish to remove the gutta, dry clean the fabric after steam setting the colors.

Directions: Pour Gutta into a soft bottle applicator with a metal tip. Squeeze the applicator to release the gutta onto your fabric. Always push the tip of the applicator firmly against the silk to ensure that the gutta penetrates the fabric.

#HDG

100 cc., ¼ Liter, ½ Liter, 1 Liter

Caution: All solvent-based guttas are flammable. Take precautions. Do not use near an open flame. Do not smoke while using it. Work in a well-ventilated area. Keep out of the reach of children.



Long Silk Vest painted using Dupont dyes and resist by Smadar Knobler



Le Tip

When needed, thin Gutta N with Gutta Solvent. Heavier fabrics require thinner Gutta and wider lines than thin fabrics.

Do not store gutta in the plastic squeeze bottles because the solvent will evaporate, leaving behind only hardened gutta.

I. Dupont Black Gutta

Black Gutta offers an additional design option. It creates a dramatic delineation between colors.

To iron any colored gutta, press on the reverse side of the fabric or use a pressing sheet to protect your gutta lines, your iron and ironing board. Hand washing of the fabric is recommended.

Caution: All solvent-based guttas are flammable. Use the cautions described under the Classic Clear Gutta Serti.

HDB 100 cc., 1 liter



Steam/Set



Man's shirt painted using Dupont dyes and resist by Earilene Dakan-Weiss



H. Dupont Silkscreening Resist HPNO

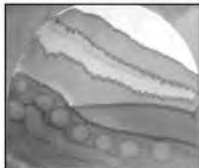


Steam Set

This water-based, high quality resist is ideal for silk screening because it will not dry or clog screens.

It is off-white and ready to use. If you need to thin it, add a few drops of water or glycerin and shake well. It is not necessary to wash the screens after every use.

#HDS 8 oz., 32 oz.



Alcohol patterning with Dupont Dyes



Alcohol Effects

This technique works best on silk that is stretched on a frame and painted with Dupont Silk Dyes. Mix a combination of:
1/3 water
2/3 ethyl alcohol (rubbing alcohol).

When the dye has dried on the silk, drip or brush on this mixture - with eye droppers and/or brushes - and move the dye around on the silk, creating dots, watery ripples, blended colors and lines and other patterns.

Allowing the dye/water/alcohol to bleed into unpainted areas will create the lines shown at the top of the above illustration.



H. Dupont Colored Gutta in a tube.

H. Dupont Colored Gutta in a Tube

This line of colored gutta captured the market immediately upon its arrival. They are available in 12 exciting colors:

Yellow	Brown
Orange	Violet
Red	Black
Blue	Gold
Green	Bronze
Flesh	Silver

This colored resist comes in a soft tube that can be squeezed easily. It does not hurt the hand. The colors in the tube can be used completely without waste. They may be used with Dupont dyes or with heat-set liquid paints. This resist enters easily into the silk and holds the design lines with softness.

Screw-type metal tips are available to use with the tubes. Sizes #4 (fine), #6 (medium) and #8 (large) are recommended (see Page 26).

After using it, wash the metal tip and close the cap of the tube.



To Set: iron the back of the fabric for 3 minutes. Once set, hand washing is recommended.

Do not store in a very hot or very cold place. #HDC



"Red Poppies" scarf using Dupont clear gutta and dyes by Gabriele Agustini

Devoré (Fiber Burn-out)



The Devoré or "Burn-out" process does not involve fire. It uses chemicals to selectively remove cellulose fibers from a fabric. It can be from a "combination" fabric like silk/rayon, or it can be on a cellulose-only fabric to artistically create selective holes. The popular Burn-out velvet is an excellent example of this technique.

Most velvets have a woven silk background with rayon as the plush surface texture. Using a stencil, brush, silkscreen or other technique, the Devoré Paste is applied in a pattern on the rayon side.

When it has dried, the fabric is heated with an iron or in a commercial dryer. Where the paste was applied, it removes the rayon velvet, leaving the untreated velvet and all of the silk backing in place - creating a 3-dimensional surface. The untouched silk backing provides stability for the fabric. The fabric is then washed to remove any remaining chemicals and can then be dyed.

Devoré will work on cellulose fabrics that have a synthetic backing as well as on the silk/cellulose fabrics. Cellulose fibers include cotton, linen, rayon and hemp

Atelier de Paris offers a pre-mixed Devoré solution (below) and also carries the individual chemicals if you wish to mix your own (please see recipe below right and the Chemicals on Pages 24-25).

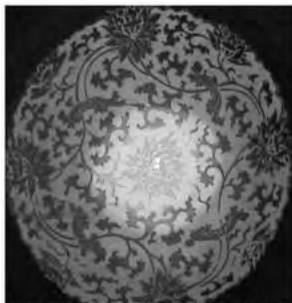
Pre-Mixed Devoré Paste

This pre-mixed Devoré or Burn-out Paste is very popular with artists. Apply with a brush, stencil, silkscreen, etc. Allow to dry. Iron for several minutes or use a commercial dryer on hot (home dryers do not get hot enough). Wash vigorously to get a clean edge. Wash your tools with warm water. #DEV 8 oz., 32 oz.

Caution: Use a mask over your face when applying the paste. Wear a respirator or use the iron outside when heating the paste.

Note: Use Sodium Bicarbonate (Baking Soda) or Washing Soda as a resist for Devoré.

It is always advisable to carry out preliminary product tests before starting a production run.



Rayon/Silk Velvet Devoré by Christine Mariotti.



Rayon/Silk Velvet Devoré by RoseMary Cohen using the Pre-Mixed Devoré Paste.

Recipe for making your own Devoré Paste:

Burn-out Powder:	200g
Thickening Agent:	500g
Glycerin:	80g
Water:	220g

1,000g

Caution: These chemicals are caustic. Wear gloves and a face mask over your mouth, nose and eyes while making and using the paste. Store the chemicals in a very safe place, out of the reach of children.



Alter Ego Dyes

Dye with two colors at the same time!

Alter Ego Dyes have become very popular very quickly. They are made by H. Dupont and have their guarantee of quality.

Alter Ego is very easy to use. In just 35 minutes, you can produce a two-color scarf. It works on "combination" fabrics:

Silk / Rayon
Silk / Linen
Silk / Hemp

Alter Ego combines a silk dye with a cellulose dye (for rayon, linen or hemp) in one mixture.

When the fabric is added, each fiber absorbs only its specific dye, resulting in separate and distinct colors for the silk and for the cellulose fiber.

It is particularly beautiful and effective for devoré or burn-out



velvets and satins as it gives them a 3-dimensional look.

Available in 10 colors for the silk and 10 colors for the cellulose fiber. Color charts available. Complete instructions included in every kit.

Colors Available

Silk Colors

701	Genet Yellow
702	Physalis Orange
703	Zinnia Red-Orange
704	Capucine Red
705	Ecorce Gold-Brown
706	Ardoise Blue
707	Turquoise
708	Santoline Green
709	Chardon Dark Blue
710	Régisse Black

Cellulose Colors

711	Jonquille Yellow
712	Passion Orange
713	Garance Red-Orange
714	Vermillion Red
715	Marron Glacé Brown
716	Bleu Molène Blue
717	Bleu Infini Slate Blue
718	Troène Green
719	Aster Dark Blue
720	Tulipe Noire Black

#AED Complete Kit*
#AE1 1/4 liter Fixative

Note: For Bulk Orders, please contact us.

* Please designate the color desired for each type of dye.



Alter Ego Dyes on a Devoré velvet scarf by Naila Aladdin-Sanders



Both of the dyes are poured into the same dyebath.



Silky Way Dyes

Silky Way Powdered Dyes work beautifully on *all* natural fibers:

- ❖ Silk
- ❖ Rayon
- ❖ Cotton
- ❖ Linen
- ❖ Devoré (Burn-out) Velvet
- ❖ Blended natural fibers ...and others

These dyes are perfect for combination fabrics, such as silk scarves with rayon fringe or the silk-backed rayon velvets used in Devoré.

These dyes may be applied by direct application, such as hand painting and 'scrunch and run' or by immersion dyeing. Water temperature is important and should be between 105° - 110° F (warm tap water).

It is always advisable to carry out preliminary tests to determine the color before working on the final product.

When stored in a cool dry place, the dye powder has a long shelf life. The liquid dye without soda ash has a long shelf life when stored in a cool place.

For best results, use the water, dye powder and soda ash solution shortly after mixing.

The mixture of the liquid dye and the soda ash cannot be kept for a long time.

Note: Steaming is not required with Silky Way Dyes.

Directions for Use

You will need:

- Dye Powder
- Soda Ash (fixative)
- Warm water
- Measuring cups and/or spoons
- Conventional and/or foam brushes
- Plastic drop cloth
- Rubber gloves
- Droppers
- Face mask for mixing powder
- Silk Wash

(1) Wear the rubber gloves and face mask to mix dye powder into water (see proportions on chart on the next page).

(2) Add soda ash to the dye and water only when ready to apply to fabric.

(3) Apply the dye using foam brushes, droppers, conventional artists' paint brushes or by immersing the fabric into the dye.

(4a) To set the dye on painted fabrics, stretch the fabric out on a plastic drop cloth and roll up the drop cloth, securing the ends with rubber bands (see illustration). Allow to cure at 60° - 70° F (room temperature) for 24 hours.

(4b) For fabric stretched on a frame, cover the frame with a plastic drop cloth overnight.

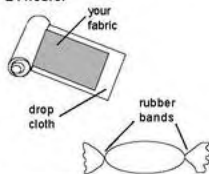
(4c) To set the fabric immersed in dye, cover the dye pot (with newspaper or any other cover) and leave in a warm place: 60° - 70° F (room temperature) for 24 hours.

(5) Wash in hot water; followed by cold water and Silk Wash. Rinse until the water is clear. Hang to dry or machine dry.

Fabric will have a soft hand and brilliant color!



Rayon/Silk Velvet Shawl painted with Silky Way Dyes by Martin Preorius. (Also see the Color Gallery)





Silky Way Dye General Color Mixing Guidelines

Note: Intensity of color varies by volume of dye. Here are some general guidelines for the proportions of dye and soda ash.

To 1 quart of water add:

Dye:	Metric:	1 gram	2.5 grams	5 grams	20 grams
	American:	1 Tbs.	2-1/2 Tbs.	1/3 Cup	1-1/4 Cups

Soda ash:	Metric:	10 grams	10 grams	15 grams	20 grams
	American:	2/3 Cup	2/3 Cup	7/8 Cup	1-1/4 Cups

The Silky Way Dyes can be mixed in any proportion to achieve an infinite range of colors.

#SWD 1 oz., 6 oz., 1 lb.

Color

No.	Color Name
201	Yellow
202	Golden Yellow
203	Brilliant Orange
204	Scarlet
205	Red
206	Brilliant Red
207	Blue
208	Brilliant Blue
209	Turquoise
210	Brilliant Green
211	Violet
212	Navy
213	Black

#SCC Soda Ash



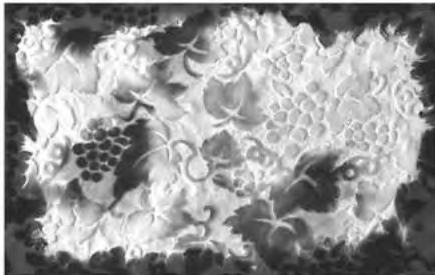
Le Tip

Dissolving the Dye

This dye dissolves very easily. If it does not, the solution may be already saturated (i.e., there is too much dye in the water).

A Note on measuring cups and spoons

Always keep a separate set of measuring spoons and cups and bowls for dyes and associated chemicals. Once used for dyeing, they should not used again for food preparation.



Devore Rayon/Silk Velvet dyed with Silky Way dyes
by RoseMary Cohen



Tjantings

Tjantings (also spelled 'Cantings') are used to draw designs on fabric and papers with hot wax in the Batik process. Silk painters who do not like using squeeze bottle applicators with gutta should consider using wax as a resist. We offer both the traditional Tjantings and the new electric one.

Electric Tjanting

A Wax Melting Pot and a Drawing Tool all in one! Very handy! The wax stays warm and the tip does not clog. #BET

CAUTION: Hold this tjanting by the handle *only* as the metal parts become hot.



Electric Tjanting



Two Brass Tjantings and the Cast Iron Tjanting.

Le Tip

Wax Characteristics

Too much paraffin will crackle and peel off the fabric. Too much beeswax will be very soft and not allow fine lines or crackle.



Textile Printing Blocks

Hand-carved antique textile printing blocks from India, Iran and Afganistan. Can be used with wax, paints, thickened dyes, and thickened inks on fabrics, artist's canvas, paper, wood, leather and other surfaces, as well as for devoré and discharge on fabrics. Some of our customers have bought them to stamp patterns in the backgrounds of their oil paintings.

The blocks can also be used to emboss velvet. Lay the block face up, lay the velvet on top, pile side up, and iron to impress on the pattern. Each block one is one-of-a-kind. Call us for a description of those currently available. #TPB

Traditional Tjantings

These tools are used the same way as the electric tjanting, except they require the use of a separate wax melting pot. We carry two kinds of tjantings.

Brass Tjantings are made with a brass bowl and polished wood handles. They come in 2 bowl diameters and a choice of 4 spout sizes. **Bowl diameters:**

#BRT101 25 mm
#BRT102 35 mm

Spout sizes:
0.5 mm
0.8 mm
1.0 mm
1.5 mm

Die Cast Iron Tjantings have a single bowl size and a choice of two spout sizes.
#BRT103

Spout sizes:
1.10 mm
1.50 mm



Metal Eye Dropper

Holds up to the heat of melted wax - used for placing dots on the Batik surface.

#MED



Wax Melting Pot

This is a special wax melting pot, which has notches around the pot rim for resting the tjanting tools so they will not roll. The temperature control is fully adjustable.

#BWP

Wax

Wax is one of the oldest and most effective resists used. It penetrates all but the thickest fabrics and holds its shape through successive dye baths and rinses.

Most batik designs are built up using multiple layers of dye and wax to create complex layers of color and pattern.

With wax, designs can be very tightly controlled or very free and spontaneous, simple to sophisticated.

Wax can also be successfully used on paper, leather, ceramics, wood and other surfaces to shield or reserve areas of the design.



Electric Wax Pot with tjantings, a metal eye dropper and, in the back, a package of special Batik Wax.

Paraffin Wax

Excellent for batik and silk painting and for "faux" batikting on paper and canvas. #W01

100% Pure Beeswax

Use of beeswax offers good "flexibility" to the silk painter and batik artist. It also hardens thread for special uses in sewing: pull the thread through the beeswax. #W02

Special Batik Wax

This wax is a good quality combination of waxes, ready to be used for batikting. It flows nicely out of tjanting tools. This special wax allows you to design fine lines and make fine crackles. It also smells great! #W03



Detail of a Batik Scarf by Lidia Suvarova.

Le Tip



Removing the Wax

Clean the wax from your fabric by ironing the fabric like a sandwich between sheets of clean paper - which can be newsprint, brown kraft paper or even 6-week old newspapers (as the ink ages, it will not transfer to the fabric).

It is important to use clean papers for each ironing. Re-using the papers will put the wax back into the fabric. Iron until there is no wax left.

Marbling



Marbling is great fun! It's easy to learn and easy to master!
You can create beautiful, colorful designs on any absorbent surface - tennis shoes, business cards, feathers, wooden boxes, scarves & ceramic flower pots, just to name a few you might want to try!



Directions for Marbling

1) Mix special formula Marbling Powder with water. This mixture creates a jelly-like substance.

2) On top of this surface, float colors in the forms of paints,

dyes or inks, depending on what you are marbling.

3) Use design tools like a comb or a stylus to create designs.

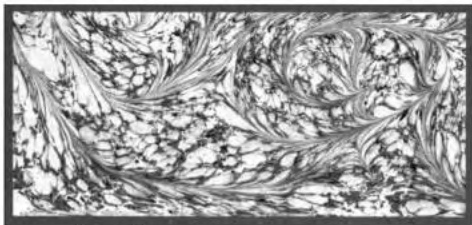
4) Lay the object (paper, fabric, wood, leather, shoe, necktie, etc.) on the colors and remove.

You're done!



Introductory Marbling Kit

This attractively packaged introductory kit contains all the basic supplies you need to try this exciting art form: 6 ½-oz Rocco Marbling Colors, a box of Rocco Marbling Powder and detailed, easy-to-follow instructions. #MIK



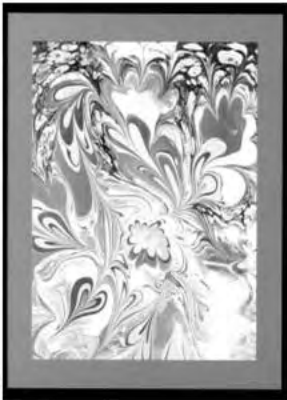
Marbling by
Elia B. Cohen



"Stone Design"
Marbling by
Rosemary Cohen



Marbling by
Rosemary Cohen



Corn Broom

Use corn broom to make whisks for sprinkling and dropping your colors. To make whisks of varying sizes, use a rubber band or tape to bind them together.

#MCB

Design Stylus

For drawing and dragging the colors into designs.

#MST

Rocco Marbling Powder

Rocco Marbling Powder is the best thickening powder on the market, formulated by us for over 10 years. It gives consistent results. Once you reach the consistency which is "not too thick, not too thin, but just right!" you can marble the whole day!

After finishing the project and cleaning the solution, you can store it for several days in a closed jar in a cool place. (The keeping quality of the solution also depends on the hardness of the water used.)

#MMP 1 lb., 5 lbs., 25 lbs.

Marbling



To clean the size, remove the remaining paint floating on the surface by dragging a strip of newspaper across the surface.



Once you are satisfied with the design on the top of the thickened water (called "size"), place the paper, fabric or other object gently on the surface. Pull it out and let it dry.

Many surfaces can be marbled.

Wood

Leather

Handkerchief

Necktie



Buttons

Pencils

Shoes



Papers

Business Cards

Cotton, Silk



"Flower Design" Marbling by RoseMary Cohen

Water Art Marbling Kit

Just add Water!

This kit is self-contained and non-toxic. It contains

- 6 2-oz bottles of primary colors
- 1/2 pound of Water Art Powder
- A Pack of Corn Broom
- A Stylus
- A Comb
- Variety of colored papers
- Accent Glitter
- Instruction Book



The Water Art Kit contains the best colors on the market to use for creating beautiful designs.

The kit itself also becomes a tray providing two sections for two people to work together.

The kit has everything you need and we offer refills for everything in the kit.

#WAT

Water Art colors and powder are non-toxic and conform to ASTM D-4236.



A marbled hair brette.

Extra Water Art Instruction Books

When you need extra instruction books.

#WAB



Le Tip

Use Alum to pre-treat fabric or any very porous surface in order to make it more receptive to the marbling printing process. Alum is available in the Chemical Section, Pages 26 - 27



Soda Ash - Sodium Carbonate

Soda Ash activates certain fiber-reactive dyes by creating an alkaline environment. Use with the Silky Way Dyes.

#SCC 1 lb. 5 lbs 25 lbs

Sodium Bicarbonate

This product is used to activate specific fiber-reactive dyes.

#SCB 1 lb. 5lbs. 25lbs.

Thickener – Sodium Alginate

This seaweed-based thickener can be used with liquid or powder dyes, including H. Dupont Dyes. Sprinkle the powder over water, mix well, then allow the mixture to stand for several minutes before adding the dyes.

When working with Silky Way Dyes, the Soda Ash may also be added to the thickener with the dye. Thickened dyes are used for detail work, direct painting, silk-screening, stenciling and stamping.

#SCA 8 oz 1 lb. 5 lbs. 25 lbs.

Special Starburst Salt

A very special salt with large crystals to use for creating starbursts and other designs in silk painting and watercolors.

#SSS 2oz 1 lb.

Rocco Special Salt Mix

A special mix of salts for different types of effects - from star designs to lines and large salt effects.

#SRS 1 lb

Silk and Fabric Softener

Use this softener to give your fabrics that final soft touch.

Directions: Mix the granules with water, then rinse your fabric with this liquid.

#SFS 8 oz

Silk Wash

Try our own formulated Silk Wash to pre-wash - to scour the fabric and remove sizing - and to after-wash your silk or any dyed fabric to prevent color transfers and dye-back. It is also great for delicate fabrics in general

The Silk Wash is unscented. It is the best product on the market.

#SSW 8 oz 1 liter

Citric Acid Crystals

These crystals are used as a fixative with acid dyes. Not as unpleasant smelling as vinegar.

#SCA 1 lb. 5lb. 10 lb.

Discharge Paste

This paste will remove most fiber reactive dye colors, acid dye colors and direct dyes from fabric. The paste can be stamped, stenciled, silk-screened or painted on the fabric.

Let dry and then iron *with steam* to remove the color. Wash to remove the residue before proceeding.

#SDP 8oz., 1 gal.

Alum

Alum is used to pre-treat fabrics, paper and other porous surfaces for marbling. It is also used to treat paper or fabric for tea dyeing. Alum is often used as a mordant with many natural dyes.

#SAL 1 lb., 5 lbs., 25 lbs.

Supplemental Chemicals



Urea Crystals

Use these crystals with powder dyes to keep the dye moist while working - particularly important in dry climates when doing direct painting with dyes that must set overnight. Urea crystals also help dyes dissolve more easily.

#SUC 1 lb. 5 lbs. 25 lbs

Potato Dextrin

Mix the Potato Dextrin to the consistency of thick cream and spread over the fabric which has been laid flat (where it can remain until it is dry). Let dry - the dextrin will create a crackle pattern. Brush the dye over the Dextrin, working it into the cracks. Let dry and set according to the appropriate dye technique. Will create a "faux" batik look.

#SPD 1 lb. 5 lbs. 25 lbs.

Rocco Marbling Powder

Rocco Marbling Powder is the best thickening powder on the market, formulated by us for over 10 years. It gives consistent results. Once you reach the consistency which is "not too thick, not too thin, just right!" you can marble the whole day! After finishing the project, you can store the solution for about a week if it is kept in a closed jar in a cool place.

#BOP 1 lb. 5 lbs. 25 lbs.

Burn-Out or Devoré Powder

Used for the selective removal of cellulose fibers in fabric (see page xx).

#BOP 1 lb. 5 lbs. 25 lbs.

Burn-out or Devoré Thickener

Thickens the Burn-out paste so that it can be painted, stenciled, etc.

#BOT 1 lb. 5 lbs. 25 lbs.

Methocel Powder

Some marblers prefer the use of Methocel for the marbling base. It may also be used as a thickening agent.

#SMP 1 lb. 5 lbs. 25 lbs.

E-6000 Glue

Excellent for glueing metal and jewelry and other non-porous materials.

#E60

Glitter

We carry a wide range of glitters in many colors. The most popular is the transparent shiny glitter. Call for available colors and types.

#SCG 2oz. 8 oz.

Price per pounds by special request (please call us). Price varies with colors and grades.

Glue for Glitter

We carry the glue for the use of glitters. Mix as much glitter as you want to the glue, so the glitter will become as shiny as you like. Use a brush or a metal tipped applicator to create precise lines.

#GFG 2oz., 8 oz.

Pounds by special request (please call us).



Black velvet scarf discharged in an African Mud Cloth pattern by Naila Aladdin-Sanders.

Applicators



Drawing Lines

In both art and craft, there is always a need to accurately draw lines, both straight and curved, with various liquids - resists, paints, dyes, inks - without a pen or brush. We offer a wide range of tools to do the job.

Traditional Gutta (resist) Applicators can be used with many flowable products: resist, paint, thickened dye, thickened ink, glazes, and others. To keep the line from spreading out when it reaches the surface, the liquid should be of a high enough viscosity to hold its shape. Granular liquids can clog the opening and should be avoided.

The Applicator is a soft plastic bottle with a small opening at the top, usually with a metal tip. Fill the bottle with a viscous liquid and gently squeeze the bottle to create lines of design. Clean when done.



Applicator Bottle

Directions: The Applicator consists of a soft plastic bottle that can be used with Metal Tips.

We recommend cutting off the first 1/8" of the neck below the first joint at the top of the bottle cap and insert the metal tip on the inside so that the end pokes out. This will prevent the metal tip from coming loose when you are squeezing. Fill the bottle with Gutta, replace the cap fitted with the metal tip, and the Applicator is ready to use.

#APB100 1 oz. 2 oz.



Metal Tips

The French Metal Tips come in a plastic box with a metal wire of the same size. The Metal Tip controls the thickness of the lines, and the metal wire is designed as a "hole cleaner" to unclog the Metal Tip. Tip #2 is the smallest and will give very fine lines. Tip #16 is the largest and it gives a stained glass look.

Sizes: Very Fine: #2, #3, #4
Medium: #5, #6
Large: #7, #8
Very Large: #10 #12, #14, #16

Screw-Type Metal Tips

When using the Screw-type, just make a small cut on the top of the cap and screw the metal tip over it.

Sizes: #4 (fine)
#6 (medium)
#8 (large)

#APT301

#APT201

Rocco Squeeze Bottles

These squeezable plastic bottles have the flexibility enabling you to apply resists and thickened paints and dyes. They are quite comfortable to use, especially the 1/2 oz. size for individuals with sensitive fingers.

Remember: These caps screw onto the bottles so that they will not pop off. Be sure to cut the spout at the appropriate line before threading the metal tip over it.

#APB200 1/2 oz, 1 oz



If the bottle has been standing upright, there will be an air bubble at the top. Before applying the resist to your fabric, press out the air bubble by using the applicator on a piece of scrap fabric or paper first.



Rocco Detail-Pen / Cone Metal Tips

These Detail-Pens or Metal Tips are great and unique tools designed for accuracy and for fine detail. They can be used for applying resists when painting on silk, or applying craft paints, glues, ceramic glazes and many more products. They screw over the spout of the Rocco Squeeze Bottles.

Sizes: # 3 (small), # 5, # 7, # 9 (large). #APT401



Using Metal Tips

Keep your paints upside down on a damp sponge in a cup or other container, while using them. This will keep the tip moist and full at all times. Clean your tips at the end of the day.

Should you occasionally be unsuccessful in unclogging the metal tips, soak the tips in water (for water-based products) or in Solvent (when using solvent-based products).



Air Pen

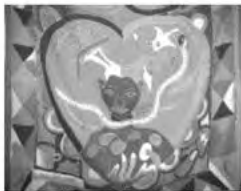
This is a really great tool for drawing with any water-soluble product and is particularly good for artists with arthritis. Use it to apply any of the following:

- Paints, dyes, resists
- Glues, inks
- Ceramic Glazes
- Icings, Chocolate (!)
- Glass Paints
- Egg decorating
- Henna designs, etc.

There is no squeezing. Plug in the electric air pump, cover the hole on the pen with your finger and the liquid flows out. Remove your finger from the hole and the flow stops. It draws clear, consistent lines. It comes complete with air pump, several cartridges and instructions.

#APP Complete Kit with tips in several sizes

#APT601 Extra Tips



"Homage to Yves" scarf
using Dupont clear gutta and Dupont dyes
by Cicely Gilman



Sharp Point Pen For Unclogging Metal Tips

This pen has a sharp metal pin point, which can be used at any time to unclog Metal Tips. This pen comes in handy if you have lost or damaged the wire that came with your Metal Tip. The pen is sold with a tube of extra needles.

#APT501



Detail of a scarf with a Zodiac theme
using Dupont black gutta and dyes
by Cicely Gilman



Rocco Magic Applicolors

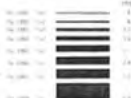
This is a versatile tool that you'll find hundreds of uses for! Applicolors have a soft foam top which fit our storage bottles (sizes: 4 oz., 6 oz. and 8 oz.). A cap to cover the foam top when not in use is included. Tops come with foam in one of two colors: White or Green.

Use the **White Foam Top** for all water-based paints, dyes, inks, etc. Use the **Green Foam Top** for all steam-set silk dyes and other liquids that containing alcohol or are acidic in nature such as Dupont Dyes.

Applicolors can be used to paint large areas of paper or fabric, to apply washes to watercolor papers, coat fabrics with antifusant or for painting directly on T-shirts with liquid paints. Or just fill with water and use them to seal envelopes.

#MCA Foam Top and Cap only

#MCC Top, Cap and 4 oz. bottle



Paint Striper

This is a great solution to drawing straight lines with gutta resist, paints and other viscous liquids. It also draws lines of any shape (not just straight). Kit includes 1 Striper with 8 interchangeable wheels, and ornamental stripes in 8 widths from 1/64" through 1/4". #APS



Traditional Brushes

We import a large selection of Chinese Brushes that are excellent for use in a variety of media:

- ❖ Watercolor
- ❖ Silk painting
- ❖ Calligraphy
- ❖ Chinese brush painting
- ❖ Leatherwork
- ❖ Fimo Painting
- ❖ Ceramics
- ...and others

Directions: When you receive your brushes, soak them in lukewarm water to remove the protective starch covering. They are then ready to use.

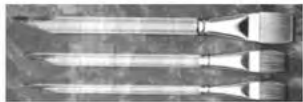
Deluxe Brush Set

A set of 3 excellent brushes personally selected by RoseMary. They have a plexiglas handle that is comfortable to hold, and are designed for watercolor artists, silk painters and Chinese Brush painters.

The set includes

- 1 flat brush for large areas
- 1 round, medium all-purpose brush
- 1 small brush for detailed work

#BR1



Basic Brush Set

A set of 3 brushes packaged attractively. They are designed for watercolor artists, silk painters and Chinese Brush painters. The brushes are made of rabbit hair (which is very soft) and have bamboo handles. The set includes a small, a medium and a large brush. #BR3



Wall Hanging painted with Dupont dyes and resists.
by Lidia Suvarova.



About Brushes

The bristle or hair part of brushes are made of animal hair (rabbit, squirrel, goat, etc.) or synthetic or a combination of both.

In general, the lighter the color of the brush hairs (for instance, rabbit hair), the softer the brush, and the darker the hairs (for instance, goat hair), the firmer the brush.

How the brush will be used is what determines the need for firmness or softness

Brushes



Black Velvet Brushes

These brushes are a unique blend of squirrel tail hair and rission black synthetic filaments that create an ideal working tool for artists. There are two sets with distinct shapes - please see illustrations at right. Each set has a small, medium and large brush.

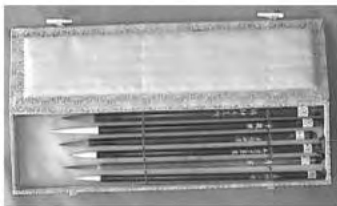
- #BR6 Set 1
- #BR7 Set 2
- #BR8 Both Sets



Set 1



Set 2



Chinese Brush Painting Set

A set of 6 small and medium brushes packaged in an attractive box is specifically designed for watercolor artists, silk painters and Chinese Brush painters. The brushes are made of rabbit hair (which is very soft) and have bamboo handles. An economical and useful set.

#BR2



Chinese Brushes

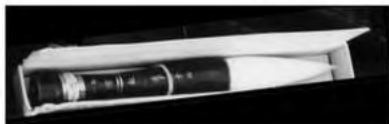
These fine brushes are made of rabbit hair.

- #BR10 Small
- #BR11 Medium
- #BR12 Large
- #BR13 Extra Large





Collector's Brushes



Giant White Tipped Brush in a Gift Box

A great brush for grand calligraphy, bold strokes, large lines and broad washes. Wooden handle. A great gift for your favorite artist.
#BR4

Brush with "Raccoon" Stripes in a Gift Box

An elegant brush for a connoisseur. Bamboo handle. The brush hairs have rings of color like a Raccoon's tail.
#BR5



Fan Brushes

Great for delicate washes and interesting brush stroke patterns.
#BR15

Stencil Brushes

These stiff, round brushes are great for stenciling and for creating special effects. We have a large range of sizes for all stenciling projects:

- | | | | |
|-------|--------|-------|---------|
| #BR20 | Size 0 | #BR24 | Size 8 |
| #BR21 | Size 2 | #BR25 | Size 10 |
| #BR22 | Size 4 | #BR26 | Size 12 |
| #BR23 | Size 6 | #BR29 | Size 24 |



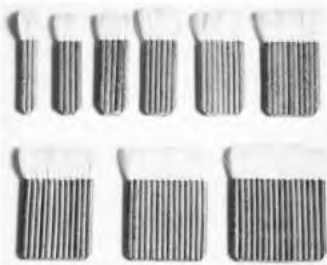
Brushes



Bamboo Wash Brushes

These traditional brushes with bamboo handles are used for applying large areas of water or color.

#BWB	3 stem	4 stem	5 stem
	6 stem	8 stem	10 stem
	12 stem	14 stem	16 stem



Wool Brush

This wool brush has a wooden handle and is great to use for painting with a wide variety of media. You can also use it to wash surfaces and dust off delicate objects. #WBB 1 1/2", 2 1/4", 3 1/2", 4"



Brush Holder

A split bamboo mat. After washing your brushes, shape the tips and roll them inside this mat, tie the mat closed and leave the brushes to dry. The mat protects the points while the open weave promotes drying. Holds up to 20 brushes. Brushes sold separately. #BHH

Foam Tipped Brushes

These small foam brushes are excellent for working in small areas and for creating special effects. The shapes include both tear-drop and oblong. Package of 12 #FTB



Foam or Sponge Brushes

High quality, low cost, disposable brushes with wooden handles. Great for stenciling and stamping. Ideal for painting large washes on silk. Can also be used with wax, enamels, latex, stains, oil paints and varnish. Clean the same way you would clean bristle brushes. Made in the USA.

#FBB 1 in., 2 in., 3 in., 4 in.



Atelier de Paris Color Gallery



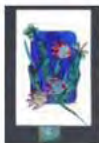
Painting on silk by Anne Lan



Red Antherium Shirt
by Olivia Batchelder



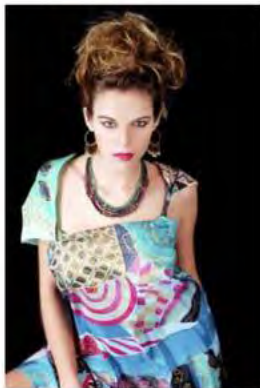
Two scarves by Jan
Mayer of Kriska
Painting on Silk



Greeting
Cards by
Rosemary
Cohen using
Rocco Paints
on Silk and
Paper



Detail of an Orchid Banner by Sissi Siska



Sarong painted by Gabriella di XX Miglia

Atelier de Paris Color Gallery



Silk garments by Louise Blumberg



Velvet shawl
by Michael Pretorius



Andrea Verona with
one of her paintings



Home decor fabrics painted
by Nora of Silkworks



Detail of a shibori
by Denise Bean

Detail of
a painting
by Suzanne
Punch



Detail of a
painting by
Young Kim

Shirt painted
using
"Scrunch 'n
Run" by
RoseMary
Cohen



Pens and Markers



Brush-Tip Refillable Pen

This is a great tool for watercolor, calligraphy and fabric painting. The tip is a soft brush which can be used to draw like a watercolor brush or to define a fine line, depending on the pressure.

To fill, dip the tip in the liquid, squeeze the inner cartridge and slowly release to draw up the dye, paint, ink or water. It will not work with thick paints or granular liquids.

To clean and change colors, dip and squeeze in water several times (although going from a dark color to a lighter color is not advisable). Available in a gold or silver pen case.

#BRP



Ghost Pen

Use this ghost pen to trace designs onto your fabric or paper. The purple lines will disappear after twenty four hours or when you apply any liquid (water, dye, gutta, paint, ink) to them.

#GHP



Permanent Black Marker

This black permanent marker is excellent for signing your name to fiber works of art or to add details to your design.

#PBM

Custom Marker: Rocco Fillable Pen

This pen was designed exclusively for Atelier de Paris! Simply unscrew the head of the empty marker and fill with any dye, ink or liquid paint, and it becomes a custom marker. It is best to refill with the same color. If it becomes dry, just refill.

It is great with free-hand painting or to fill in small details. The long-lasting nib can be cut for a sharper point. #RFP

NOTE: This pen is sold with our label on it. If you wish, you can request unlabelled pens in order to use your own labels.





Silk: Scarves, Clothing Blanks, Accessories and Yardage

Atelier de Paris is the direct importer of silk products from China. We only buy grade "A" silk, and we work very closely with our suppliers in China. We constantly seek out the best quality at the best price. Your complete satisfaction is our goal.

Silk has been the luxury fabric of choice throughout the ages, not only because of its sensuous feel but also for its intensity of color. Silk takes dyes more richly and vividly than any other fabric. Working with them - as well as wearing them - is always a delight for the senses.

Our silk scarves have hand rolled edges sewn with silk thread. Scarves are packed individually. Our customers paint these scarves for the finest boutiques, couture designers and museums in the United States and around the world.

We carry a wide variety of sizes and types. However, if you do not see a size that you are looking for, please contact us. It is impossible for us to list everything in this catalog, and we are also constantly bringing in new and interesting products. It is also possible to special order scarves, garments or fabrics if you meet the minimum requirements.

Although we carry grade "A" silk, irregularities are part of the very nature of 100% silk, and they are not considered defects, but, rather, add to the luster of the silk.

Most of our silk is ready to be painted. If you want to pre-wash, we recommend our Silk Wash. Add one Tablespoon of Silk Wash per sink-full or ¼ Cup to a washing machine (average load).

Use our Fabric Softener for rinsing after dyeing or painting, and it will allow the silk to revert to its natural soft hand.

Your comments and suggestions are welcome, and we consider them an asset to the growth of our business.

The following are the most popular types of silk used by artists. Silk is measured in mm (mommie). The higher number, the heavier the silk.

Caution: Working with Silk is Addictive!

Habotai or China Silk

Habotai is a very popular fabric. It is a smooth, flat weave, dyes well, and comes in a wide range of weights. The lightest is 5mm which is very light and almost transparent. Habotai 8mm is the most popular weight and is less transparent than 5mm. Resists penetrate easily and evenly, and the dyes work very well.

Crepe de Chine (CDC)

This is a very popular fabric used for both scarves and garments. Available from 8mm, it is lustrous with a superior hand and drape. It looks extremely rich when painted. CDC in the 16mm weight is the most popular. The silk takes on deep, rich color and is easy to paint.

Charmeuse or Satin-Back Crepe

Charmeuse is one of the most luxurious and sensuous silks - shiny on one side and matte on the other. The 12.5 mm weight which is excellent for scarves. The 19mm weight is outstanding for garments and wall hangings.

As the dyes stay wet longer on this fabric, it allows for greater range of possible techniques and for revising earlier work. It is popular to paint on the crepe side (the matte side) for men's garments.

Crepe Georgette

This is a very feminine fabric - very light, gossamer and transparent. The dyes flow very slowly and unevenly on this fabric, creating interesting variations and textures. Once painted, the silk shows off the subtle surface.

Jacquard

Jacquard silks have a pattern woven into them, and are also known as Damask. (The name "Jacquard" came from the French loom on which they were first woven in Europe.) We carry a variety of designs that change frequently. Please call for the current patterns.



Silk and Velvet Scarves

All our scarves have hand-rolled hems, sewn with silk thread, and are packed individually. You may mix and match any of the scarves on this page to qualify for the discount. Scarf sizes are shown in inches.

Habotai 5mm

- #S01 11x11
- #S02 11x60

Habotai 8mm

- #S21 11x11
- #S22 15x15
- #S23 22x22
- #S24 30x30
- #S25 35x35
- #S26 44x44
- #S27 8x54
- #S28 8x72
- #S29 11x60
- #S30 14x72
- #S31 22x72
- #S32 44x60
- #S33 45x72 Sarong

Twill 10 mm

- #S38 17x17
- #S39 35x35

Crepe De Chine 8mm

- #S40 11x11
- #S41 15x15
- #S42 17x17
- #S43 35x35
- #S44 8x54
- #S45 8x60
- #S46 11x60
- #S47 15x72
- #S48 44x72 sarong

Crepe De Chine 12 mm

- #S51 35x35
- #S52 44x44
- #S53 9x54
- #S54 11x60
- #S55 14x72

Crepe De Chine 16mm

- #S60 44x60
- #S61 44x72 Sarong
- #S62 44x44 with 5" fringe
- #S63 45x60 with 2" charmeuse border
- #S64 42x42x63 Triangle with 5" silk fringe
- #S65 55x72 Cape with hand-rolled edge

Charmeuse 12.5 mm

- #S66 35x35
- #S67 44x44
- #S68 9x54
- #S69 11x60
- #S70 14x72
- #S71 44x72 sarong

Crepe Georgette 8mm

- #S72 35x35
- #S73 44x44
- #S74 8x54
- #S75 14x72
- #S76 22x72 + 2" satin border
- #S77 44x72 Sarong
- #S78 55x72 Cape with hand-rolled edge

Jacquard 17mm

- #S79 35x35
- #S80 11x60
- #S81 14x72

Striped Satin with Crepe Georgette

- #S82 11x60

Devoré Velvet Scarf with Fringe

- #S83 14x72
- Please call us for the current velvet devoré designs.



Two scarves by Sida Suvarova



Scarves with Gutta Resist Designs

We have a changing variety of scarves with gutta designs preprinted on them in either gold or black. Please call us for the current designs. #SGR



Silk and Velvet



Silk and Velvet Yardage

- #YH5 Habotai 5 mm
- #YH8 Habotai 8mm
- #YE6 Crepe de chine 16 mm
- #YC9 Charmeuse 19mm
- #YCG Crepe Georgette
- #YVF Solid Rayon Velvet/Silk Backing
- #YVS Rayon Velvet Stripes/Silk Backing

Bolts average 50 yards.



Striped Rayon/Silk fabric - white and dyed

Silk Garment Blanks

All our silk garments are sewn with silk thread. You may mix and match any of the types of garments on these two pages to qualify for the discount.

Tank Top

Available in small, medium and large.

Habotai 10 mm

#TTH

Charmeuse 19 mm

#TTC

Crepe de Chine 16 mm

#TTE

Polo Shirt

Habotai 8 mm. The sides are serged, but not sewn closed so that the shirt can be stretched like a canvas for painting, and sewn afterwards. Available in small, medium and large.

#PST



Women's Pants

Crepe de Chine 16 mm. Elastic waist, no fly. Available in small, medium and large.

#PNT



Boxer Shorts

Charmeuse 19 mm. Available in small, medium and large.

#BXS





Silk Garment Blanks

All our silk garments are sewn with silk thread. You may mix and match any of the types of garments on these two pages to qualify for the discount.



Camisole

Charmeuse 19 mm.
Available in small,
medium and large
#CAM

Long Kimono Robe

Charmeuse 19 mm. One
Size #KRL



Vest

Charmeuse 19 mm. **Black**
Available in small, medium and
large. For a picture of the vest,
please see page 6 #VFST



Butterfly Jacket

Habotai 8 mm. Available in small,
medium and large. #BFJ

Short Kimono Robe

Charmeuse 19 mm. One Size.
#KRS



Silk Cape

This large silk cape or poncho is available in two silks. When unfolded, it is almost square making it very easy to stretch on a frame and paint.
#SC1 14 mm Crepe de Chine
#SC2 Chiffon

Front of a Silk Chiffon Cape painted with Rocco Pearl Resists, Dupont Colored Guttas and Dupont Dyes, with hand beading of real pearls.
by RoseMary Cohen



Fancy Jacket

Crepe de Chine 14mm.
Available in small,
medium and large
#SJK



Silk Fashion Accessories

All our silk fashion accessories are sewn with silk thread. Mix and match any of the fashion accessories to qualify for the quantity for the discount.

Neckties

We carry a large selection of the best quality neckties. They are made from different types of silk (see list below) in the latest pattern made specifically for us. Ties are white silk except where noted below. We also carry tie pins and cufflinks (see our "Silk Jewelry" Page 42). Our ties do not twist or shrink. Width: 3 3/4".

Habotai 10 mm

#TH1

Charmeuse 19 mm

#TC2

Black Charmeuse 19mm

#TCB

Crepe de Chine 16 mm

#TC1

Jacquard 16 mm (various

designs) #TJ1

Neckties with Gutta Designs

We have neckties with gutta designs already printed on them. They are available in 5 designs in two weights of silk.

Designs:

Tropical	Hawaiian
Fish and Shell	Pelican
Classical	Flamingo
Indian	

Please see Page 56 for details.



Two hand-painted silk neckties using salt patterning by RoseMary Cohen



Hand-painted silk necktie by Audrey Ezratty



Hand-painted silk necktie by Earlene Dakan-Weiss

Custom Neckties

Atelier de Paris can make custom neckties from your hand-dyed fabric. Please see "Services" Page 62.



Painting Neckties

Finished neckties should not be immersed in liquid or washed.

Use the Rocco Liquid Paints or other fabric paint.

When heat setting, do not press hard on the tie with the iron.



Silk Fashion Accessories

All our silk fashion accessories are sewn with silk thread. Mix and match any of the fashion accessories to qualify for the quantity for the discount.



Silk Hats

Our silk hats are made for us in China with 100% cotton lining.

Round Sun Hat

Beautiful round hat in 10 mm Habotai silk. It can be beautifully decorated with our silk roses and bias ribbons. #HRS

Baseball Cap

With an adjustable snap band in the back. #HBC

Sun Visor

The elastic in the back of the visor allows it to fit almost all sizes of heads. #HSV



Cummerbund and Bow Tie

Sold as a set in an attractive box - or the bow tie may be purchased separately. Both are made from white Charmeuse 19mm. Pre-tied bow on card.

#CBT Set

#BTO Bow Tie Only

Suspenders

White Charmeuse 19 mm silk suspenders with golden metal snaps. Sold in a special tie and suspender gift box which includes: a clear top, a pre-cut card to hold the tie and the suspenders and the base box which is green.

#SUS



Hair Scrunchies

Our silk scrunchies are made out of Habotai 8 mm.

#HHS



Hair Bow with Clip

These are beautiful hair bows made from 8 mm Habotai, attached to a good quality hair barrette on the back.

#HHB



Silk Fashion Accessories

Umbrella

These beautiful umbrellas can be used for sun or rain. Habotai silk is doubled with vinyl and can be painted easily with Rocco or other fabric paints. Made with a wooden handle in Italy, they are automatic, unisex, and of a very high quality. #UMB



Silk Umbrellas painted with Rocco Resists and Liquid Paints by Young Kim

Silk Purse in White or Black

Made from 19 mm Charmeuse in white or black, this bag features a zippered pocket in the back and a long flap in front. The bag has a detachable shoulder cord. With the cord detached, the purse can be worn at the belt.

Size: 18" x 6"
#SPW White
#SPB Black



Silk Fan

A paintable hand fan made from Habotai and bamboo.

#SSF

(Note: We also carry large, decorative wall Fans in our "Silk Home Accessories" section, Page 47)

Quilted Silk Eye Glass Case

These charming eye glass cases are made from quilted Habotai silk. They can also be used for cell phones. #EGC



Complete set with the theme of Daniel and the Lions by RoseMary Cohen

Judaica

Kippa

Silk Hat. Charmeuse on the outside, cotton lining on the inside. #JD1

Tzitz

Kosher fringes for knotting from Israel. #JD2

Attara

Band around the neckline. We carry several styles, both painted and beaded, and can print custom designs. #JD3



Silk Fashion Accessories

Silk Ribbon

Woven-edge Satin Ribbons.

- #R15 1.2 cm wide 5 meters
- #R11 1.2 cm wide 11 meters
- #R25 2.5 cm wide 5 meters
- #R21 2.5 cm wide 11 meters

Silk Bias Ribbons

Silk bias ribbons are available by the yard in Habotai, Satin and Crepe de Chine.

8 mm Habotai

- #BR1 3/4" x 77 yards
- #BR2 1 1/2" x 77 yards

10 mm Satin

- #BR3 2" x 36 yards

8mm Crepe de Chine

- #BR4 2" x 36 yards

Silk Cords

Our hand-rolled silk cords are 40" long. Ideal for necklaces, Chinese knots, button loops, Chinese frogs and other decorated items.

- #CD1
- #CD2 Pkg of 1 doz.

Silk Spaghetti Cords

Silk cords sold by the yard

#SSC

Silk Thread

Silk sewing thread, available on a large cone in White, Blue, Red, Yellow or Black. Please be sure to specify color.

#SST

Silk Roses

Made from 8 mm Habotai in 2" and 4" sizes, these roses are ideal for decorating hats, being made into pins or hair barrettes, or just wearing behind your ear.

The 4" and 8" roses in white and black silk organza are very nicely finished in the back for pins and other decorative purposes.

Habotai 8 mm

- #RH2 2" white
- #RH4 4" white

Silk Organza

- #ROW 4" white
- #ROB 8" black

Basket decorated with silk ribbons and silk roses.



Lamp decorated with silk ribbons and silk roses.



Silk Jewelry

Atelier de Paris manufactures a wide assortment of silk-covered jewelry blanks, using 19 mm Charmeuse. Jewelry may be mixed and matched to qualify for the discount.

Custom Work: We also do custom blanks for jewelry or button forms from your hand-dyed, hand-painted silks. The extra cost is nominal. Just send us your fabric with the size and shapes you require. We will send your order back within two weeks.

Silk-Covered Earring Blanks - Post and Clip

Earring blanks are sold by the pair. The minimum order to qualify for the discount is 48 pair. All earring blanks may be mixed and matched to qualify for the discount.

- #J01 Very small Round
- #J02 1-1/8" Round
- #J03 1-5/16" Round
- #J04 1-1/2" Round

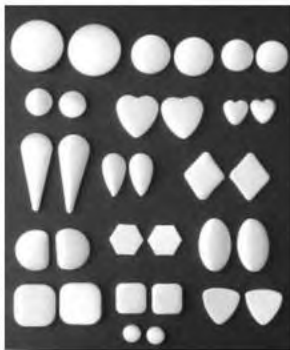
- #J05 1-1/2" Square
- #J06 1-7/8" Square
- #J07 1" Hexagon
- #J08 1-1/4" Three-quarters Moon

- #J09 3/4" Heart
- #J10 1-1/4" Heart
- #J11 Oval
- #J12 Oval

- #J13 1-1/4" Tear Drop
- #J14 2-1/4" Tear Drop
- #J15 1-1/8" Triangle
- #J16 1-1/8" Diamond

- #J17 7/8" Round, Gold Rimmed
- #J18 7/8" Round, Silver Rimmed
- #J19 1-1/8" Round, Gold Rimmed
- #J20 1-1/8" Round, Silver Rimmed

- #J21 1-1/2" Round, Gold Rimmed
- #J22 1-1/2" Round, Silver Rimmed
- #J23 7/8" Round Dome
- #J24 1-1/8" Round Dome



Be sure to specify Post or Clip on the Order Form.



Silk-Covered Blanks

You supply the backing - they can become buttons, earrings, clips, etc. The minimum order for quantity discount is 100. They may be mixed and matched to qualify for the discount.

- #B01 Very small Round
- #B02 1-1/8" Round
- #B03 1-5/16" Round
- #B04 1-1/2" Round

- #B05 1-1/2" Square
- #B06 1-7/8" Square
- #B07 1" Hexagon
- #B08 1-1/4" Three-quarters Moon

- #B09 3/4" Heart
- #B10 1-1/4" Heart
- #B11 Small Oval
- #B12 Large Oval

- #B13 1-1/4" Tear Drop
- #B14 2-1/4" Tear Drop
- #B15 1-1/8" Triangle
- #B16 1-1/8" Diamond

- #B17 7/8" Round, Gold Rimmed
- #B18 7/8" Round, Silver Rimmed
- #B19 1-1/8" Round, Gold Rimmed
- #B20 1-1/8" Round, Silver Rimmed

- #B21 1-1/2" Round, Gold Rimmed
- #B22 1-1/2" Round, Silver Rimmed
- #B23 7/8" Round Dome
- #B24 1-1/8" Round Dome

- #B25 Silk Ring



Scarf Clips

Traditional Scarf Clips with paintable silk blank.

- #J40 Square
- #J41 Round

Scarf Clip Findings

- #J48 Round
- #J49 Other Shape



Silk Jewelry

Atelier de Paris manufactures a wide assortment of silk-covered jewelry blanks, using 19 mm Charmeuse. Jewelry may be mixed and matched to qualify for the discount.

Hair Band

Stretch your silk over this white plastic hair band.

#J42 17 mm

#J43 25 mm

#J44 35 mm

Shoe Clips

#J47 Per Pair

Hair Clip Findings

Cover these findings with your hand-painted silk.

#J45 Oval

#J46 Rectangular



T-Shirt Buckle

Silk-covered T-Shirt Buckles.

#J30 Square

#J31 Round



Silk covered buckles



Hair Clip Findings

Painted Wall Fan
(Design available)



Silk Home Accessories

Home Accessories may be mixed and matched to qualify for the discount.

Lamp Shade Paper

We carry special self-adhesive non-flammable paper for making (without silk) lampshades. The paper is 48" wide and is sold by the yard. We recommend painting with Rocco Liquid Paints. Priced per yard.

#LSP

Pillow Cases

Our Silk cases for throw pillows are 15" x 15" in a 8mm Crepe de Chine. They have a zipper along one edge and are sewn with silk thread. (Stuff with a 16" x 16" pillow blank.) If you are using low-water immersion dyeing or shibori, use as is. If you are painting designs on them, insert a 15" x 15" piece of freezer paper inside to prevent bleed-through while painting.

#PLC

Decorative Wall Fan

Silk and Bamboo Wall Fan ready to paint with Rocco Liquid Paints or other fabric paint. Size: 36" high x 52" wide. (See illustration on previous page.)

#WFN

Silk Panels

These silk panels are made of 8 mm Habotai, stretched and glued over metal wire frames.

They are ideal for children's classes or silk painting workshops using the Rocco Liquid Paints. (The metal frame can make it difficult to steam them.) When painted, they can be hung as suncatchers in windows or outside and are great as holiday decorations.

#SP1 4" Round

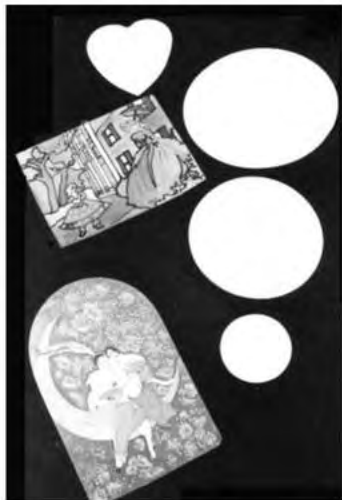
#SP2 8" Round

#SP3 10" Round

#SP4 7-3/4" x 10-3/4" Rectangular

#SP5 7-1/2" x 12" Rectangular

#SP6 6-3/4" Heart



Stretched Silk Panels



4" Round painted with a Carousel Horse by Rose Mary Cohen

"Roundabouts"



"Roundabouts" are 4" silk disks with a preprinted design ready for you to color with markers or fabric paints. We recommend the Rocco Liquid Paints, but other fabric paints and markers work just fine. These are great projects for all ages – just select the colors and paint!

You can add embellishments such as beads, lace, ribbons or gems. Create beautiful Christmas ornaments – or mobiles – or suncatchers! Use your imagination and let the colors flow freely on these great designs. An Atelier de Paris original design. You can also order blank ones for your own designs.

#RBT

Blank

30



Close-up of # 3



Christmas Tree with Roundabout decorations





Cut-Out Window Cards

Use these custom-designed cut-out cards to send unique, personalized greetings or invitations. Use up scraps of paintings, marbled papers and experiments or create designs specifically for the cards. The cards are 5 1/2" x 8 1/2" and come in packs of 6 of a single design with 6 inside papers and 6 envelopes.

Directions: Attach your design, fabric or painting to the inside paper - or marblize the paper itself. Then glue the inside paper to the inside of the opening of the card. For best results when glueing, use an adhesive mounting spray.

- #GC1 Heart
- #GC2 Window
- #GC3 Cat
- #GC4 Oval
- #GC5 Rectangle



Example using marbled paper insert.

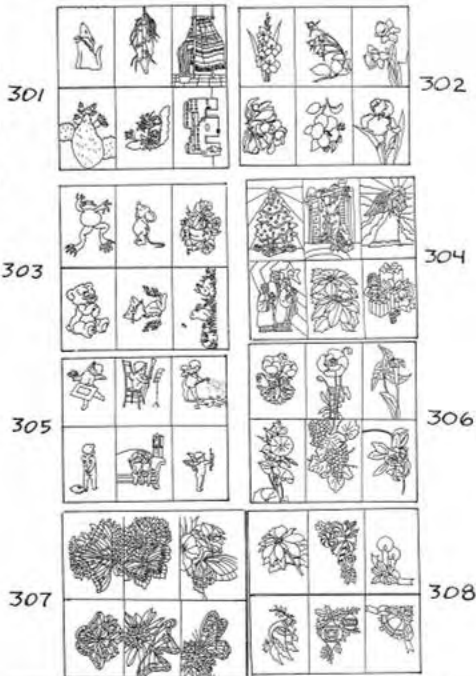


Greeting Cards with Pre-Printed Resist Designs for Painting

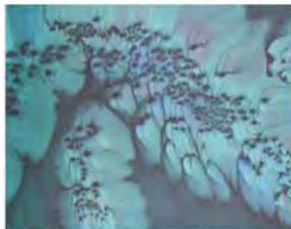
A real time-saver and fun besides! These silk designs are pre-printed with resist lines that hold perfectly - and fit the greeting cards. The silk can be colored with silk dyes, fabric paints, markers and inks. There are 8 sets available, each with 6 different designs in each set. Each set includes 6 cards, 6 envelopes, 6 inside papers and 6 silk designs.

- #GR1 Southwest (301)
- #GR2 Flowers 1 (302)
- #GR3 Animals (303)
- #GR4 Christmas 1 (304)

- #GR5 Little Angels (305)
- #GR6 Flowers 2 (306)
- #GR7 Butterflies (307)
- #GR8 Christmas 2 (308)



Atelier de Paris Color Gallery



Detail of salt effects
on a silk scarf by
Lucilla Warren



Hair Clip with
Marbled Silk



Silk dress and shoes
by Earlene
Dakan-Weiss



Silk garments by
John Sun Silk



Detail of a wall hanging by
Susan Skove

A painting done
with only dye and salt
by RoseMary Cohen



Dance costumes
by Nili Glazer of
Keshet Chaim
Dance
Ensemble





Picot Frame — A 'Must Have' for Every Fiber Studio

Picot Frames are the "Cadillacs of Frames" in silk painting! They are the best frames on the market and are well worth the investment. Once you purchase and use one of these frames, you will wonder why you did not buy it earlier.

Instead of dealing with sore fingers from push pins or frustration from pins and hooks popping out as you paint, you will be free to use your creative energy.

Two of the four bars of this frame contain closely spaced small and sharp brass needles, whose function is to hold the fabric tightly in place. When you are painting, your fingers are protected from the sharp needles by protective hinged covers that fold over the needles.

The fabric is stretched with ease, using a hard brush (included) and can be removed in a second. Fabrics can also be re-stretched quickly if they begin to sag from excess moisture or salt.

Hemmed scarves of any size can be stretched on the large frame - from the smallest up to 2 yards long. With the largest frame it is possible to paint up to five 11" x 60" scarves at the same time.

The frame unfolds for use and folds away into a compact size for easy storage.

Custom-sized Frames can be made to order. Please contact us for a Special Order.



#PF1 25" x 25" (outside), 22" x 22" (inside)

#PF2 50" x 50" (outside), 45" x 45" (inside)

#PF3 18" x 75" (outside), 15" x 72" (inside)

#PF4 24" x 64" (outside), specially designed to paint two 11" x 60" scarves

#PF5 79" x 64" (outside), 76" x 58" (inside)

Extra Needles: Extra strips of brass needles are available by the meter. **#PN**

Stretcher Frame

For best results in painting on silk, the fabric should be stretched on a frame. This economical frame is excellent for beginners. It is quickly assembled, made of soft wood so the pins will go easily into the wood and hold the fabric firmly in place.

The size is 24" x 24" which fits a 22" x 22" scarf.

#STF



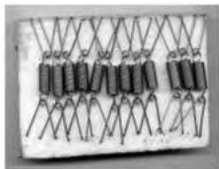
Hooks and Tacks



Silk Pins

Colorful, sharp pins that hold the silk without leaving marks behind.

#SPP Box of 100



Silk Stretcher Pins

These Pins were manufactured especially for Atelier de Paris. They are excellent for stretching silks of all types and weights. One end of the pin is designed to penetrate into the wooden frame, while the other end has two sharp claws and a spring to hold the fabric tightly. (They are also good for tightening ironing board covers - just hook the two sides under the board). Box of 24 #SSP



3-Claw Suspension Hooks

These hooks consist of a plastic handle with 3 very sharp claws on one end and an opening for rubberbands of different sizes on the other end. With the hooks, you will no longer have to struggle to pull the silk over the wooden frames. The rubberbands do the work for you. Just adjust the length of the rubberbands to the size of the frame and fabric. These hooks are excellent for stretching hand-rolled silk scarves and fabric that is smaller than the frame being used. Box of 24.

#SSH



Silk Tacks

Use these three-pronged sharp tacks to secure pieces of silk that do not have edges with rolled hems (otherwise, the heads will leave a round mark on the hem). The Silk Tacks penetrate easily into wooden frames and hold the fabric down firmly.

#SS5 Box of 50

#SS1 Box of 100



Silk Flower Pins

Colorful, sharp pins with a flower design for the top of the pin. They hold the silk without leaving marks behind.

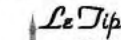
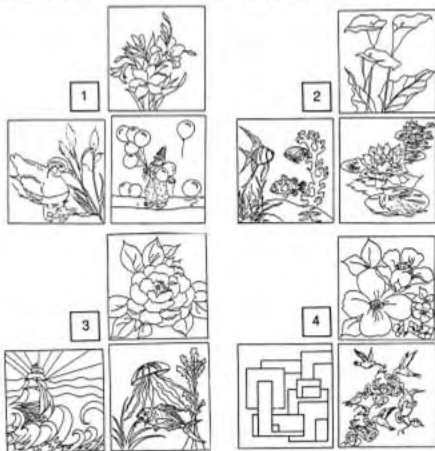
Box of 50 #SFP

Caution: Use hard rubberbands that do not snap. Protect your eyes and face.



Patterns

We offer a collection of patterns for painting on silk scarves, clothing, wall hangings, T-shirts, stained glass, wood items and any other surface you can think of!



Directions for Silk Painting with a Pattern

1. Lay the scarf or garment directly over the pattern or place the pattern under the stretched silk.

2. Use a Ghost Pen to trace your design. When you are done tracing your design, stretch the fabric and paint it. If you are using resist and are laying the silk directly on the pattern, be sure to use a smaller size metal tip as the gutta resist will touch the paper and spread.



#PAT Pack of 3 patterns

#PAC Complete set of four patterns(12 designs)



Double Headed Tracing Wheel

Use this double-headed tracing wheel for transferring pattern designs. Wheel sizes: Narrow and wide notched. Use the narrow-notched wheel for

transferring pattern markings onto medium or heavy weight fabrics. Use the wide-notched wheel on delicate fabrics. Also useful for tracing architectural or engineering blueprints.
#TTW

Eye Droppers

Ideal for measuring small quantities of liquids and for dropping dyes and paints onto fabrics and paper. Also a handy tool for filling the Rocco Refillable Pen. Droppers are available in plastic or glass.

Plastic Droppers (the longer ones in the picture above):

#PD1 Pack of 6

#PD2 Pack of 24

#PD# Pack of 144

Glass Droppers

#GD1 Pack of 6

#GD2 Pack of 24

#GD3 Pack of 144



Open box with
mixing tray and set
of cups



Rocco Color Mixing Tray with a Set of Cups

Very, very popular item with artists!

Atelier de Paris developed this practical tray for working with and storing small amounts of dye, paint, ink or other liquid. The tray holds 18 1-oz plastic cups with lids.

The tray is excellent for mixing colors, storing colors or as a teaching tool. Accidents can happen to anyone, but if you knock over this tray, the box will absorb the spill and your painting will be safe. There is a space on the side to record colors or formulas of mixed colors. Extra cups and lids are available. #TMC



Color Mixing Cups in box with other palettes.

Small Palette

The round palette in the picture above holds a small quantity of 6 different liquid dyes, inks or paints. Great for small projects, travel or outdoor work. Has a clear plastic snap-on lid for protecting the contents between work sessions. #RPT

Color Wheel

Use this practical chart to learn the fundamentals of color mixing. This guide is easy to use and will come in very handy during your painting. The Color Wheel is a must for any artist. #CWW

Rubber Gloves

We recommend that you wear these basic white latex gloves to protect your hands from dyes and paints. Sizes: Small, Medium, Large. Box of 100. #RRG

Plastic Jars and Bottles for Storage

Don't contaminate your pure colors by pouring used or diluted colors back into their original bottle. Use these plastic jars for storage instead. (Be sure to label them!)

#PSJ 2 oz. 4 oz. 8 oz.

Pocket Color Guide

This small color chart will provide you with quick reference to colors mixing. #CWS

Sprayer Bottles and Caps

Economical, all-purpose spray bottle. This super-fine mist from the spray head is as delicate as an airbrush. 8 oz. #SBB

Strong Rubber Gloves

These green or blue gloves offer better protection because of their strength and can be reused. Sizes: Small, Medium, Large. Box of 100. #SRG



Splatter Painting Screens

Great for working with kids! or for scattering colors when marbling... or for shadowprints on silk... or to use over stencils.... or your ideas!

Hold the screen about 8" above the paper/silk and gently drag a brush full of paint or dye back and forth over the screen. The screen mesh is stainless steel and framed in heavy plastic.

Mesh comes in 1mm or 3mm square openings.

#SPL1 1 mm screen mesh

#SPL3 3 mm screen mesh



Steaming Silk to Heat Set Dyes

Steam setting is easy! All you need is a large pot with a rack, water, and a heat source. However, if you are painting a large quantity of fabrics on a regular basis, you may wish to use our services (please refer to our Services Section for further details). Or you may wish to invest in a steamer.

Horizontal Stove Top Steamer

Set this steamer over two burners on a regular stove or over individual electrical burners, such as hot plates. It accepts fabric up to 36" in width. Very efficient, economical and easy to use. Dimensions: 6" x 6" x 38" #HSS



Directions: Roll up your fabric in steaming paper around the metal rod (included), place in the steamer and steam set for one hour. Steam sets up to 20 yards of fabric at one time. Directions included.

Vertical Electric Steamer

This unit steam sets fabrics up to 54" in width. It is a professional stainless steel steamer with double wall construction. The electrical heating element is 2000 Watts, to be used with either 110 or 200 volts, and includes an automatic safety switch. Steam sets up to 50 yards of fabric.

Dimensions: Overall height 74", extender 11", interior 9".

This steamer is shipped in three packages and instructions are included. There is a manufacturer's 30-day warranty on electrical parts and a 1-year warranty on structural parts.

#VES



Pressing Sheet

This pressing sheet is non-stick, reusable, and heat resistant. It can be used for heat-setting metallic guttas, pearlized colors, fusible adhesives, and delicate fabrics. ALSO: If you use a very hot iron to iron a wet fabric on the pressing sheet, the colors will be set without having to steam set your fabric!

Standard size is 8" x 11". Custom sizes are available upon request. #PSS

Steaming Paper

Order a roll and you will always have this porous steaming paper handy. Roll weighs about 45 lbs.

#SPR1 Size: 1000' long and 36" wide
(for the stovetop steamers)

#SPR2 Size: 1000' long and 48" wide
(for the vertical steamers)



Rocco Introductory Liquid Paint Set

Try silk painting on *All* fabrics with this new and convenient kit. Packaged in an attractive box, you will find:

- 5 2-oz. Rocco Liquid Paints
- 2 oz. Paint thinner
- 1/2 oz. Pearlized Resist
- 2 Foam Applicators
- 11" x 11" Hand-rolled 100% silk hanky
- Color chart
- Complete instructions.

#RIK



Rocco Deluxe Liquid Paint Set

In this attractive kit, you will find *Everything* that you need to start painting on silk and on all other fabrics:

- 7 2-oz. Rocco Liquid Paints
- 4 oz. Paint thinner
- 4 oz. Pearlized Resist
- 1 oz. Squeeze Bottle with a Metal Tip
- 22" x 22" Hand-rolled 100% silk scarf
- 24" x 24" Wooden stretcher frame
- Large brush
- Medium brush
- 3 Design patterns
- Box of 100 push pins
- Color chart
- Complete instructions.

#RDK

Rocco Introductory Pearlized Resist Set

For one low price, try 8 of the exquisite Pearlized and Metallic Resists. Use them to draw or paint on silk and all other fabrics, leather, wood, paper or clay - or stamp, stencil, silkscreen - anything you want! Metal tip included.

#RPK



Pre-Resist Necktie Kit

This Kit includes :

- 1 Tie with Resist Design
- 8 Rocco Liquid Paints
- 2 Brushes
- Mixing cup
- Color chart
- Complete instructions

There are 7 designs available in 2 weights of silk. You can also buy the kit with a white tie without a resist design.

Habotai Chameuse

#NH1	#NC1	Dolphins
#NH2	#NC2	Hawaii
#NH3	#NC3	Classic
#NH4	#NC4	Tropical
#NH5	#NC5	Indian
#NH6	#NC6	Pelican
#NH7	#NC7	Flamingo
#NHB	#NCB	Blank



H. Dupont Introductory Silk Painting Kit

In this attractive kit, you will find **Everything** that you need to start painting on silk:

- 7 50 cc Dupont Dyes
- Gutta Resist
- 1 oz. Squeeze Bottle with a Metal Tip
- Color chart
- Complete instructions includes information on how to steam-set

This Introductory Dupont Kit is a great way to try silk painting. #DIK



H. Dupont Introductory Kit



H. Dupont Deluxe Kit

H. Dupont Deluxe Silk Painting Kit

In this attractive kit, you will find **Everything** that you need to start painting on silk :

- 7 50 cc Dupont Dyes
- 4 oz. Dye Dilutant
- 4 oz. Pearlized Resist or 100 cc. of Gutta N
- 1 oz. Squeeze Bottle with a Metal Tip
- 22" x 22" Hand-rolled 100% silk scarf
- 24" x 24" Wooden stretcher frame
- Large brush
- Medium brush
- 3 Design patterns
- Box of 100 push pins
- Color chart
- Complete instructions includes information on how to steam-set

This comprehensive Dupont Kit is an ideal present for your friends or yourself. #DDK



Detail of a silk painting
by Dolores Littles



Water Art Introductory Marbling Kit

This attractively packaged introductory kit contains all the basic supplies you need to try this exciting art form:

- 6 ½-oz Rocco Marbling Colors
- 1 Box of Rocco Marbling Powder
- Easy-to-follow instructions

#MIK

Deluxe Water Art Marbling Kit

Just add Water!

This kit is self-contained and non-toxic. It contains

- 6 2-oz bottles of primary colors
- 1/2 pound of Water Art Powder
- A Pack of Corn Broom
- A Stylus
- A Comb
- Variety of colored papers
- Accent Glitter
- Instruction Book

The Water Art Kit contains the best colors on the market to use for creating beautiful designs.

The kit itself also becomes a tray providing two sections for two people to work together.

The kit has everything you need and we offer refills on everything.

#WAT

Water Art colors and powder are non-toxic and conform to ASTM D-4236.



Extra Water Art Instruction Books

#WAB



Silk Painting Books

- #BB01 The Art of Silk Painting vol. 1
- #BB02 The Art of Silk Painting vol. 2
- #BB03 The Art of Silk Painting vol. 3
- #BB04 The Art of Silk Painting vol. 4
- #BB05 Silk Painting, The Complete Guide
- #BB06 Silk Painting, The Artist's Guide
- #BB07 Creative Silk Painting,
- #BB08 Silk Painting for Fashion and Fine Art
- #BB09 Inspirational Silk Painting from Nature

- #BB10 Painting Flowers on Silk
- #BB11 Painting on Silk, Images of Africa
- #BB12 Silk Painting- Tuckman & Janas
- #BB13 Shibori
- #BB14 Silk Painting Beginners Guide
- #BB15 Creative Batik
- #BB16 French Peinture Sur Soie with real size patterns (more than 30 numbers are available)



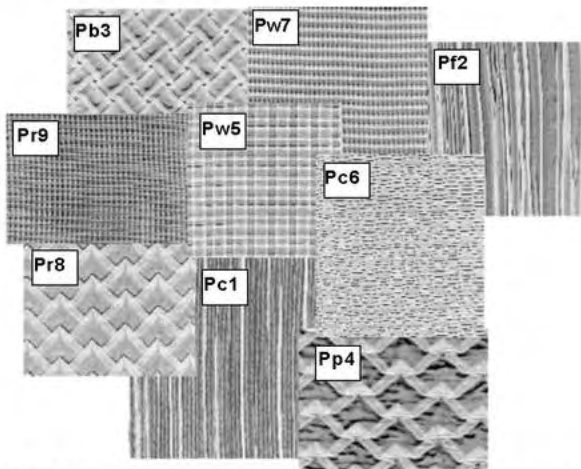


Special Pleating

Now you may send us your painted silk and in a week we can send you back pleated silk. You may also send painted garments and we can pleat them for you. If you are sewing a garment, you should make it almost double size. Minimum order: 10 yards (will shrink to 5 yards after pleating). **Every two yards will shrink to one yard.**

We have several designs available, but the most popular ones are shown below:

		Size	Fusing
Pc1	Crunch		yes
Pf2	Fortuny		yes
Pb3	Basket Weave	32x44	yes
Pp4	Pineapple (small & large)	32x44	yes
Pw5	Window Box		no
Pc6	Crazy eight		no
Pw7	Window Crystal		no
Pr8	Reverse jumbo pineapple	32x44	yes
Pr9	Radiator		no



Services

Our services are available to anyone, even if you do not use or buy our other products. Our customers know that when they deal with us, they not only buy a product, but also have access to our knowledge and services. We try to help our clients with difficulties, so call us if you have a question. If you get an order that seems too big for you, don't refuse it until you call us. We often have a solution.

Steaming

To facilitate your work and save time, we steam your painted silks for you. We have been providing steaming services for over 18 years and our customers are very satisfied with the results. We use a professional steamer and take great care over your artwork. However, in the case of an accident, we will only replace an equivalent amount of white silk of the same quality.

Standard Steaming

One-week turnaround is standard. Priced per yard

#STM1 Fabric to 36"

#STM2 36" and up:

Rush Steaming

If you need the steaming to be done within a day of our receipt of it, a rush charge will be added to the steaming charge.

Important Instructions

Always write your name on your silk and enclose it in a plastic bag.

If you mail the items to us, be sure to identify each piece and its size on your order form.

For items to be returned by mail, please let us know the amount of insurance you want placed on the package. Insurance cost is approximately \$.40 per \$100.00 of insurance.

When sending us your order, add \$10.00 for return postage. We will return the unused portion of the cost when we mail your order back to you.

Sewing

We offer the following sewing services for both large and small quantities:

#SEW1 Hand-rolled hems

#SEW2 Machine Hemming

#SEW3 Pleating

#SEW4 Sewing

Let us know your needs. Cost depends on quantity.

Services

Other Services

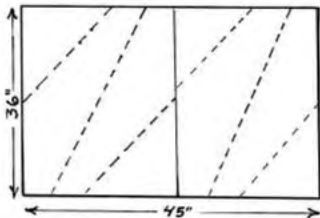
We also offer the following services. Please let us know your exact needs. Cost depends on quantity.

- #SRV1 Pre-Gutta Printing
- #SRV2 Devoré Printing
- #SRV3 Dyeing

Neckties

You can make ties from your handpainted silk yardage. Minimum order is one block of fabric that is 36" x 45" - which makes approximately 4 ties. The cost of each tie includes construction, linings and a small label. If you need to have your labels sewn on as well, there is a small additional cost.

- #SRV4 Necktie Construction
- #SRV5 Label Sewing



Pattern for a 45° Necktie

Cummerbund, Bow Tie and Suspenders

We can make these items from your painted fabric.

- #SRV6 Cummerbund and Bow Tie Set
- #SRV7 Bow Tie Only
- #SRV8 Suspenders with metal clips
- #SRV9 Suspenders with leather ends: Please specify Black, brown or white leather.

We have a great gift box for these. Please see Page 60.



Create Your Own Unique Jewelry

These "semi-finished" jewelry findings make it easy to make your own original and attractive jewelry. Your artwork creates the finishing touch!

Embellish your findings with:

- Treasured or antique fabrics
- Hand-painted Silks
- Fimo clay designs
- Paintings on paper
- Wood veneer mosaics
- Glass mosaics
- Photographs or copies of photos
- Gold, Silver or Copper Leaf
- Enamels
- Beaded designs
- Embroidery
- Needlepoint
- Ribbon embroidery
- ... and More!

You can paint directly on the inserts with acrylic or metallic paints (our Rocco Paints and Pearlized Resists work very well!).

This catalog includes a wide variety of the designs we currently have available - and we are always adding new styles.

Many of the front design shapes can be used interchangeably with the backs to create pins, scarf clips, earrings (both clip and pierced), cufflinks or tie pins.

We carry a variety of styles of:

- Necklaces
- Pins
- Pendants
- Bracelets
- Tie Clips
- Tie Pins
- Bolo Ties
- Business Card Cases
- Pill Boxes
- Picture Frames
- Notebooks
- Hand Mirrors
- Lipstick case with mirror
- ... and more!

Please call us for more information or requests.



Instructions for Attaching Fabrics or Paper

- 1) Lay the insert plate down on the wrong side of your fabric or paper. Following the line of the insert, mark the same line about 1/4" further out on the fabric/paper. (If the piece is quite small, use only 1/8" extra width or narrower.) Cut out the paper or fabric along the line.



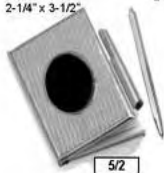
- 2) Spray the front side of the insert (the rounded side) with glue (we recommend 3M Artists' Mount Adhesive Spray Glue).
- 3) Smooth the fabric/paper over the glued surface, pressing out air bubbles and wrinkles.
- 4) Turn the piece over and spray the same glue on the back side (the flat side) of the insert.
- 5) Turn over the extra 1/4" edge of the fabric/paper onto the back side, pressing firmly. Add more glue if necessary.
- 6a) For the jewelry findings that have prongs, place the back side of the insert against the flat side of the backing, put both in the frame and bend the prongs down to enclose the two pieces.
- 6b) For the findings without prongs, glue the back of the insert to the flat side of the backing. (We recommend E-6000 glue.)

You're done!



Miniature Frames and Elegant Cases

Notebook
with Pen
2-1/4" x 3-1/2"



5/2

Small Photograph Album
2" x 2"



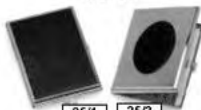
503 P/F

Address Book
with Pen
2-1/4" x 3-1/2"



5/1

Business Card Cases
2-1/2" x 4"



25/1

25/3

Miniature Frames



72



73



71



70

Locket

1-1/2"



1024/R

Contact Lens Case

2"



1-3/4"

5741

Lipstick Case and Hand Mirrors

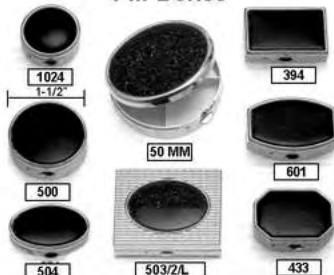


453

3

2

Pill Boxes



1024

1-1/2"

394

50 MM

601

500

503/2/L

433



Pendants and Pins

All of the jewelry findings show on this and the following pages are quite versatile. The backs on many of the designs may be changed to create a pendant, a pin, a cufflink, an earring, or a scarf clip. As the example on this page shows, sometimes, they are both.



Additional Designs
(not actual size)



If you see a pin design you like, but would like it as a pendant - or earrings you'd like as cufflinks - just ask us.

Some designs consists of 3 parts:



(1) Frame (2) Insert (3) Backing.

Other designs use only the (2) Insert and the (3) Backing.

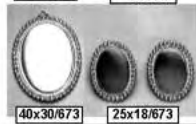
Combination Pendant and Pin



All findings shown in this Catalog with finished designs are provided as examples only.



Actual Size



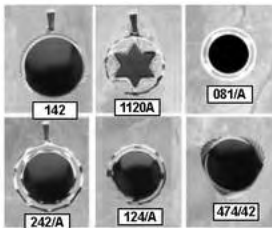
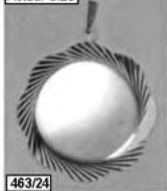
Actual Size





Pendants and Pins

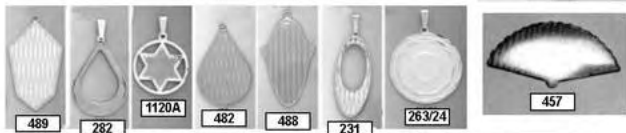
Actual Size



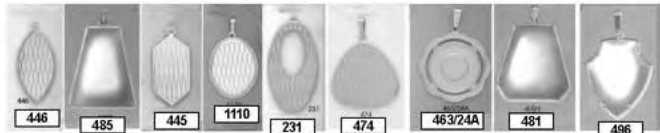
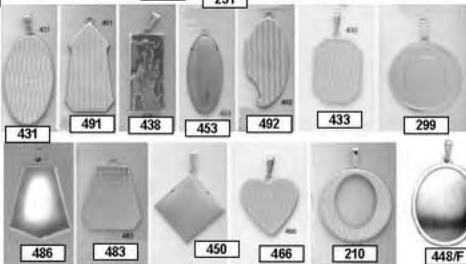
Actual Size



Additional Designs (not actual size)



Actual Size



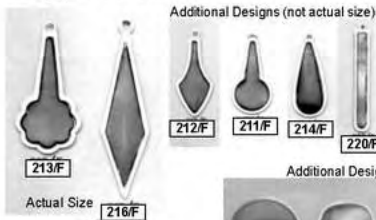
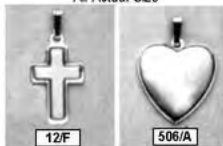


Pendants and Pins

Customize your jewelry with a piece of treasured fabric, wood veneer mosaic, a photocopy of an antique family photograph or a child's face, fimo clay sculpture, a beaded design, or small needlepoint. You can paint directly on the metal with acrylic or metallic paints, apply gold, silver or copper leaf or use foiling.

Note: When using a 3-dimensional material with a design that includes the frame, allow enough flat space for the frame to fit snugly against the insert.

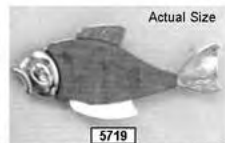
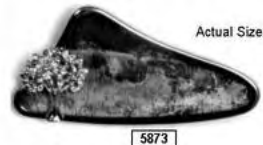
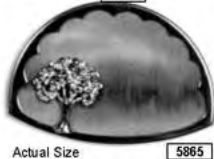
All Actual Size



Additional Designs (not actual size)

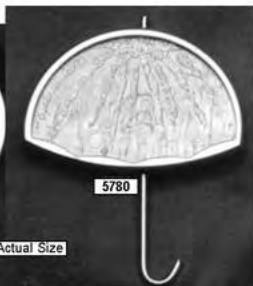
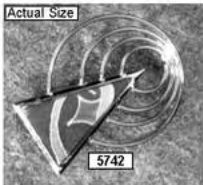


Actual Size





Pins, Scarf Clips and Earrings



Use photocopies of family photographs in your jewelry and give them as presents on special occasions.

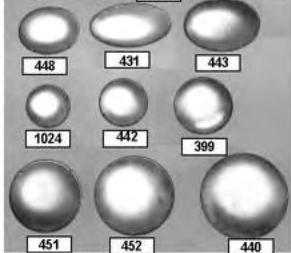
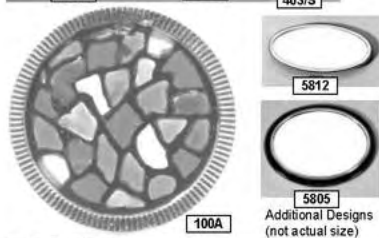
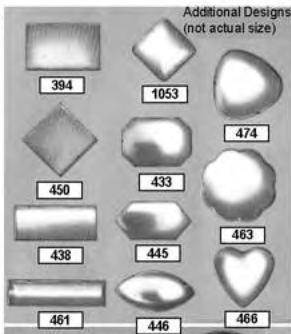
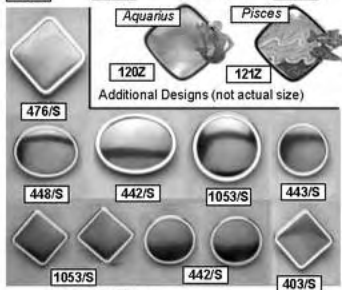


Additional Designs (not actual size)





Pins, Scarf Clips and Earrings





Barrettes, Scarf Clips and Earrings

Some designs may be used with different backs. The same front can become a pin, a scarf clip or an earring - either clip or pierced.



Scarf Clips

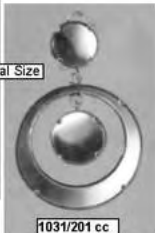


5741 5741 5741 5741

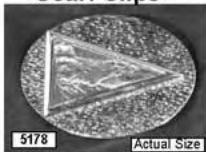


Actual Size

1031/213



1031/201 cc



5178

Actual Size



Actual Size

1012

Cuff Bracelet



5161

5179

5171

5160

Additional
Designs
(not actual
size)

Barrettes



438



5741

Actual Size



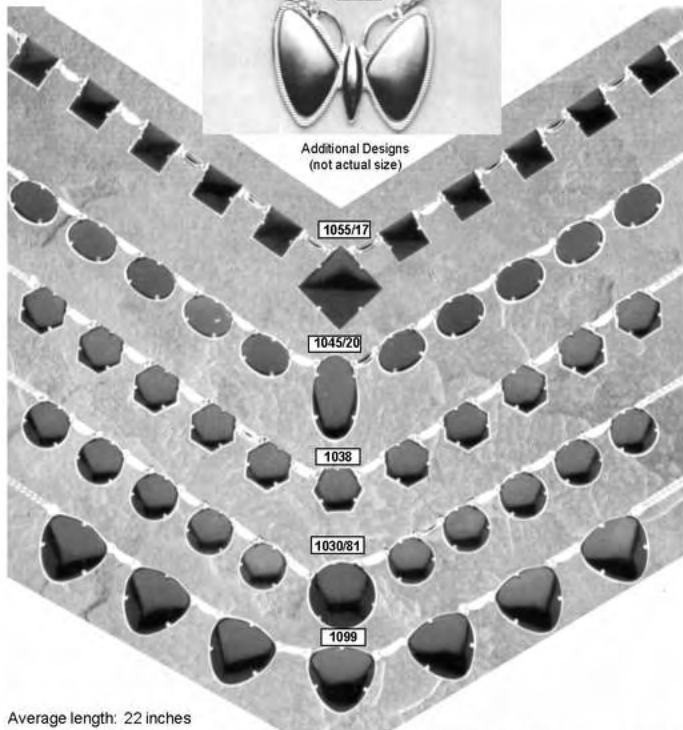
1012



Necklaces



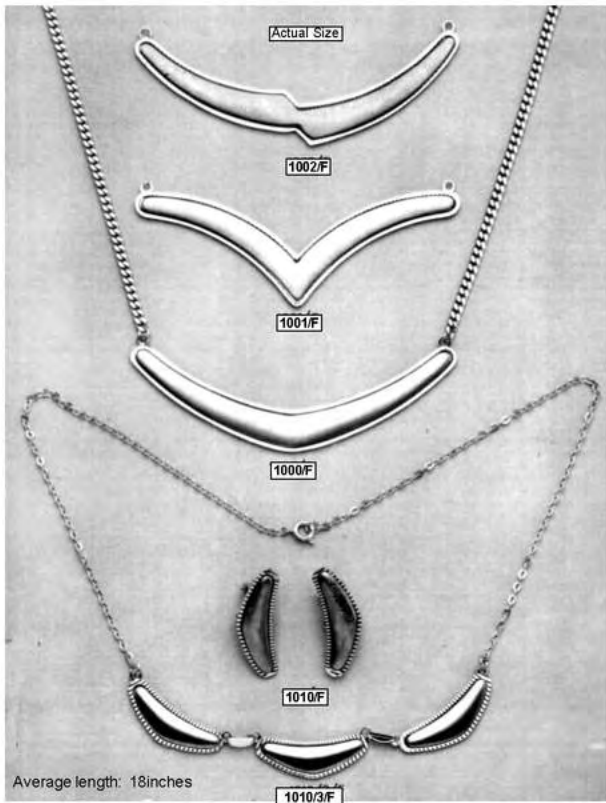
Additional Designs
(not actual size)



Average length: 22 inches



Necklaces





Bracelets

Actual Size



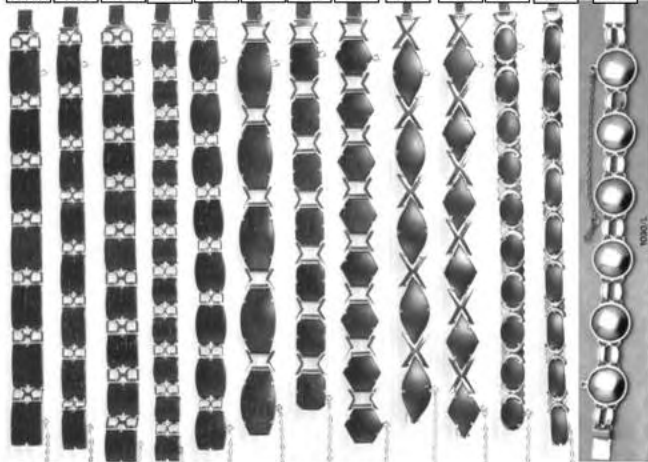
Actual Size



Actual Size



1041/A 1138 1034/A 1140 1139 1141 1042 1134 1122 1121 1094 1093 1030/L



Additional Designs (not actual size)



Bolo Ties and Tie Accessories

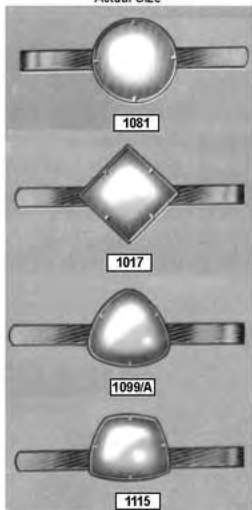
Tie Tacks and Cufflinks are available to match each of the Tie Bar styles shown below.



Actual Size

Tie Bars

Actual Size



Actual Size

1111/M

Key Ring

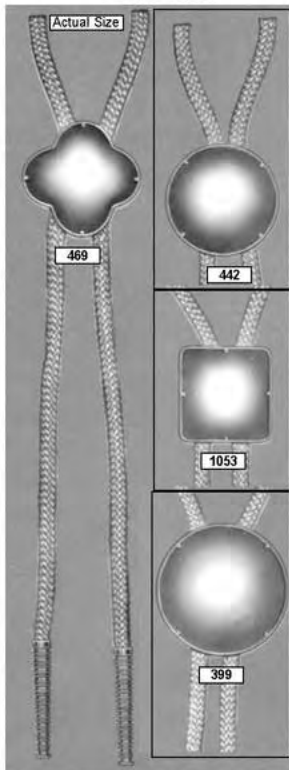
Tie Tacks

Actual Size



Reverse Side

Bolo Ties





Tie Hooks

Made of strong plastic, these 2-3/4" high hooks hold ties, belts, and scarves.

Pack of 24
#THH

The Clever Clip

Perfect for scarves, and hundreds of hard to hang items! Makes a great sign holder. Entire clip swivels around the hook. Jaws open to 3/8" and tilt back and forth. Pack of 24

#CCC



Clear Scarf Hook

Just thread the scarf through the loop and hang on a rack or bar to show off scarves. Comes in a pack of 24.

#CSH

Plastic Gift Boxes

These small clear plastic boxes, with a rigid top and bottom, are handy for all sorts of gifts. They come in either clear or black color.

#CGB Clear

#BGB Black



Tie and Suspender Boxes

Special tie and suspender gift boxes which include:

- A green base box
- A clear plastic top
- A pre-cut card that holds the tie and the suspenders

#TSB

A selection of our ties, blank and painted. For more information on ties, please see Page 38.

Books by Dr. RoseMary Cohen



Korban

The Sacrifice of Liana

by Dr. Rosemary H. Cohen

This is the story of one family's loss, but it will bring comfort and insight to anyone who has lost a child, a mate, a loved one, or a dear friend. It carries a universal message of hope and healing. Liana's death was tragic, and its repercussions echoed in the family for years. Family members could not share their grief, each suffered alone, hiding his or her wounds. It is the power of this spirituality that makes this book unique.

ISBN 0-9667361-0-9

#KTSL

Terrorists or Martyrs?

by Dr. RoseMary H. Cohen

RoseMary Cohen, who grew up in the Middle East and has a Doctorate in Sociology from Sorbonne-Paris, exams the historical roots and historical parallels of the 9-11 events.

ISBN 0-9667361-3-3

LICO Publishing, 2003

#TOM



Water Art

by Dr. RoseMary H. Cohen
with Elia B. Cohen

An introductory guide to Marbling with complete instructions and color illustrations.

ISBN 0-96687361-1-7

LICO Publishing, 2000

#WAB

Atelier de Paris

Tel: (310) 553-6636 Fax: (310) 553-9621 Website: www.silkspplies.com Page 74

Books by Dr. RoseMary Cohen

The Survivor

by Dr. RoseMary H. Cohen

Set in the early 1900's, *The Survivor* is a tender and sensitive story of a young girl caught in the crossfire of family traditions and political upheaval.

She wishes for an education, but marries as demanded by tradition. When she is happy as a new bride, living in luxury, with a devoted husband, the war shatters her life, transforming her into a member of the living dead. Yet she continues living and struggles hard to educate her only daughter, her sole reminder of a deep love and a glorious past.

This unique book is the true story of a young woman who witnessed unspeakable horrors, yet remained calm and peaceful. She survived and moved beyond the tragedies of life without complaint to help her daughter, her grandchildren and others.

Story and illustrative color paintings by RoseMary Cohen.

ISBN 0-9667361-2-5

#TS



Childhood



The wedding



The main sanctuary - Saint Sarkis



Yegrem on his white horse



Looking inside Saint Sarkis

Illustrations from
The Survivor



The stork family

Silk Painting Guide

Preparing Your Tools

Be sure your table or work surface is clean before beginning.

The Frame

If you are using stretcher bars, remove old strips of masking tapes and replace with ones on the frame. If your stretcher bars are new, place masking tape on the top surface of the frame. (If you are using the Picot frame, skip this step.)

Adjust the frame so that it is a little larger than your fabric or scarf.

Make sure that your brushes are clean and free of old dyes. It helps to keep a separate brush for yellow colors.

The Silk

Inspect your silk for flaws before beginning. Reject any that have snags, runs or tears.

If you are unsure if the silk is PFD (prepared for dyeing), wash it with Silk Wash and let it dry before using.

If you are using stretcher bars, lightly stretch silk along the vertical edges of the frame and attach it in place with silk tacks, three claw pins or stretcher pins.

If you are using the Picot frame, no pins are used. Tuck the silk into the brass needles with the brush, pull the frame as tightly as possible without popping pins, and tighten the wing nuts.

The Pattern

Place your pattern under the frame and center it.

Trace your design with a ghost pen. (The color of the ghost pen "ink" is purple. The ink will disappear within 24 hours or upon contact with any liquid, dye or gutta resist.)

Applying the Resist

Before you start, check the penetrating ability of the gutta resist you are using on a scrap of the silk you are using. If necessary, thin the gutta and test it again. (The heavier the silk, the thinner the gutta needs to be to penetrate all the way through.)

Pull the gutta bottle towards you while following the pattern. Start at the corner farthest away from you and work towards you.

Important: Make sure that all the lines meet completely and that there are no broken or open spaces for the dyes to slip through.

Allow the gutta/resist to dry and inspect for the breaks by looking at the back of the silk, holding it up in front of a light or window. Touch up any breaks or openings found.

Remove pattern from under the silk.

Raise the frame above the table with blocks if needed.

If you want to sign your name using resist, now is the time to do it.

Silk Painting Guide

Applying the Dyes

While working with dyes, it is better to wear gloves to protect your hands.

Select and prepare your colors and test them out first on a scrap of silk. Evaluate the palette to ensure the selected colors work well together.

Paint the design first, the background next and the border (if any) last.

Begin by applying dye at the top left part of your design, working in one section at the time.

Important: Keep each area that you are working in wet.
Do not go over sections that are already dry or you will get streaks.

Work quickly, allowing the dyes to work for you. Do not paint right up to gutta line as the excess dye may jump the line. The dye will bleed to the line without getting the brush that close. Where you are blending colors, have the colors ready to go and work quickly but smoothly. Keep the colors moist as you are working. If they dyes are allowed to dry, you may get unwanted lines which are difficult to remove.

As a basic rule, it works best to paint with your lightest colors first.

After your design is finished, choose the background colors and test them. **Note:** be sure you have enough color to complete all the areas at once before starting the background.

Before beginning the background, think about how you will move around your design. If there are any small enclosed parts, fill them in first.

Work quickly and try to keep the edges of background wet to prevent streaking. Remember to let the dyes work for you.

If your piece has a separate border, choose the border color and test it. Paint the border.

Allow the piece to dry thoroughly (if it is cool to touch, it is still damp).

If you did not sign your name in resist earlier, now sign your name with a black permanent pen.

At this point, your piece is in a very fragile state. Until the colors are steam set, do not expose the fabric to water, alcohol, or light. You may keep it in a plastic bag (fold it gently).

Roll the fabric in steaming paper and steam.

After steaming, unroll the silk and let it cool. Wash with Silk Wash in cool water until the water is clear. Line dry and iron.

Enjoy your finished piece!

Ordering Information

Shipping

Orders are shipped within 2 to 5 days after receipt of order. Often, they may be shipped the same day. We always strive to keep an adequate stock on hand. However, there may be times when we will be out of a particular product. If this occurs, we will automatically backorder items unless you instruct us not to do so. Standard shipping is by UPS Ground. For faster service, check the appropriate box on the Order Form

Payment

Payments accepted are C.O.D., check, money order or credit cards.

Net 30 Days terms are extended upon credit approval. New accounts must submit 3 credit references and appropriate bank information. There is a 1.5% finance charge per month on past due accounts. There is a \$ 25.00 service charge on all returned checks.

Claims and Returns

Report any in-transit damage to the carrier immediately upon receipt.

All claims for damage or dissatisfaction must be made within 7 days of receipt of merchandise. The return of stock must be authorized by Atelier de Paris before return shipment and is subject to a 20% restocking fee. Unauthorized returns will be refused and returned at the customer's expense.

Sales Tax

California Residents who are not on file with us for resale, please add Sales Tax.

Prices

All prices are subject to change without notice.

Terms

All terms are subject to review.



BULK RATE
U.S. POSTAGE
PAID
NO. 179
BEVERLY HILLS, CA



Versatile Tools for Creative Artists

